








Jerry's
2022

Jerry's 2022

Index

| | | |
|---|---------------------------------------|-----------------------|
| | Dresses - Dance Length | Page 2 - 12 |
|  | Dresses - Ladies | Page 13 - 46 |
| | Dresses - Exam & Practical | Page 47 - 50 |
|  | Dresses - Girls | Page 51 - 84 |
| | Skirts | Page 85 - 89 |
|  | 1-Piece & Catsuits | Page 90 - 96 |
| | Practicewear | Page 97 - 122 |
|  | Mens Skating Wear | Page 123 - 126 |
| | Synchro & Team Orders | Page 127 |
|  | Tights | Page 128 |
| | Protective Wear | Page 129 - 130 |
| | Off Ice Training | Page 131 - 132 |
| | Blade Covers & Soakers | Page 133 - 138 |
| | Skate Guards | Page 139 - 144 |
| | Gloves & Legwarmers | Page 145 - 147 |
| | Giftware | Page 148 |
| | Jewellery | Page 149 - 150 |
| | Skate Bags | Page 151 - 156 |
| | Skate Accessories | Page 157 - 160 |
| | Boots & Blades | Page 161 - 176 |



Made in Canada at our production facility and warehouse

Size Chart

| SIZE | WEIGHT | HEIGHT | BUST | WAIST | HIPS |
|--------------|-------------------------|---------------------------|-------------------------|-------------------------|-------------------------|
| Youth 4-6 | 32 - 40 lbs/ 14-18 kg | 3' - 3'6" / 91-106 cm | 20 - 22" / 50-56 cm | 18 1/2 - 21" / 47-53 cm | 21 - 23" / 53-58 cm |
| Youth 6-8 | 40 - 50 lbs/ 18-22.5 kg | 3'7" - 4' / 105-122 cm | 22 - 23 1/2" / 56-60 cm | 20 - 22 1/2" / 50-58 cm | 22 1/2 - 25" / 57-63 cm |
| Youth 8-10 | 50 - 60 lbs/ 22.5-27 kg | 4' - 4'4" / 120-132 cm | 23 - 25 1/2" / 58-65 cm | 22 - 24" / 56-61 cm | 24 - 26 1/2" / 61-67 cm |
| Youth 10-12 | 60 - 75 lbs/ 27-34 kg | 4'4" - 4'8" / 130-142 cm | 24 1/2 - 29" / 62-73 cm | 23 - 25" / 58-63.5 cm | 26 - 30" / 66-76 cm |
| Youth 12-14 | 70 - 90 lbs/ 32-41 kg | 4'7" - 4'11" / 140-150 cm | 28 1/2 - 32" / 72-81 cm | 24 - 26 1/2" / 61-67 cm | 30 - 34 1/2" / 75-88 cm |
| Adult Small | 90-105 lbs/ 40-47 kg | 4'11" - 5'3" / 139-160cm | 31 - 35 1/2" / 79-89 cm | 25 - 28 1/2" / 63-72 cm | 33 1/2 - 37" / 85-94 cm |
| Adult Medium | 100-125 lbs/ 45-56 kg | 5'2" - 5'6" / 157-168 cm | 34 - 37" / 86-94 cm | 28 - 31 1/2" / 71-80 cm | 36 - 40" / 91-101 cm |
| Adult Large | 120-135 lbs/ 54-61 kg | 5'5" - 5'9" / 165-175 cm | 36 - 39" / 91-99 cm | 30 - 34 1/2" / 76-87 cm | 39 - 43" / 99-109 cm |
| Adult XL | 135-160 lbs/ 61-72 kg | 5'5" - 5'11" / 165-180cm | 38 1/2-43" / 98-110 cm | 33 - 37 1/2" / 84-95 cm | 41 - 46" / 104-117 cm |

This size chart is a general guideline only - for border line sizes, choose the larger size.



574 Crystals & Lace Dance Dress - Black velvet dance dress with long black and white lace sleeves, a dropped back with marquis shaped keyhole and a scattering of crystals at the front. Long georgette skirt with an elegant tapered hem at one side that elongates the leg line. Sizes: Youth 12-14 - Adult Small, Medium, Large

Jerry's



**Dance
Collection**



576



576 Grace by Lace Dance Dress - Royal blue glitter lace in a sophisticated style with classical long sleeves, a high neck with a back keyhole and a matching georgette skirt with a slit at one hip. Lined. Sizes: Youth 12-14 - Adult Small, Medium, Large, XL

575



575 All That Glitters Dance Dress - Keyhole mesh sleeves and a trimmed V-neck bodice of swirling gold and silver glitter on black velvet add extra interest to this elegant dance dress. Double layer skirt of black over shimmery gold linen chiffon. Sizes: Youth 12-14 - Adult Small, Medium, Large

575



576



577

**577 Red Rhumba Dance**

Dress - Crimson red velvet dress with an asymmetrical bodice and crystal ring accent at the shoulder which is balanced by a slanted triple skirt edged in silver.

Sizes: Youth 12-14 - Adult Small, Medium, Large

577



578

**578 Blue Cascade Dance**

Dress - This attractive dress features a shaded blue glitter lace that blends to white at the waist and a double georgette skirt edged in silver to show off the tulip hem top skirt. A classic back keyhole completes the look. Lined. Sizes: Youth 12-14 - Adult Small, Medium, Large

578





579

579 Gold Dances Dress - Rich gold glitter velvet dress with a flattering princess cut skirt, feminine shirred mesh at the shoulders and a classic V-back with spaghetti straps. Lined. Sizes: Youth 12-14 - Adult Small, Medium, Large

580 Emerald Dance Dress - Deep hunter green velvet dress with a curvy off-the-shoulder cut and a sparkling emerald toned glitter design across the bodice. Long glove inspired mesh sleeves and a matching georgette skirt. Sizes: Youth 12-14 - Adult Small, Medium, Large



580



579



580

581 Swirling Shoulders Dance

Dress - Subtle and sophisticated, this black velvet dress features black flocked swirling mesh across the shoulders and a simple, flowy black georgette skirt. Sizes: Youth 12-14 - Adult Small, Medium, Large





**582 Tango & Twirl Dress -
Royal Blue or Deep Wine -**
Rich jewel tone colours beautifully
designed in a flattering shoulder
skimming neckline and dipped
back with crossed strap accents.
Matching long mesh sleeves and
a flowy skirt complete the look.
Sizes: Youth 10-12, 12-14 - Adult
Small, Medium, Large, XL



583
Jet
Black

583 Lace Inset Dance Dress - Jet Black or Deep Wine - Classically styled velvet dress with long lacy sleeves, a sweetheart shaped front, slim back keyhole and flowy skirt inset with lace accents.
Sizes: Youth 12-14 - Adult Small, Medium, Large, XL

583
Deep
Wine

583
Jet
Black

583
Deep
Wine

583
Jet
Black

Jerry's



Dance

584
Icy
Lilac



584
Icy
Lilac



584
Black
Star



584 Sidestep Dance Dress - Black Star or Icy Lilac - Flowy and feminine, these dresses take a step off the beaten path with layered, slanted skirts and angled asymmetrical crystal bursts accented with a band of subtle glitter. Lined. Sizes: Youth 12-14 - Adult Small, Medium, Large



585

585

585 Davenport Dance Dress - A black velvet dress swirled with silver and purple glitter and styled with an asymmetrical mesh neckline and triple layer skirt that overlaps and angles down from one hip. Sizes: Youth 12-14 - Adult Small, Medium, Large

585



586



586 Tiffany Dance

Dress - This pretty tiffany blue velvet dress features one shoulder styling with a crystal accent ring and a triple layer matching skirt in slanted layers with silver edging. Lined. Sizes: Youth 12-14 - Adult Small, Medium, Large

587



586



587



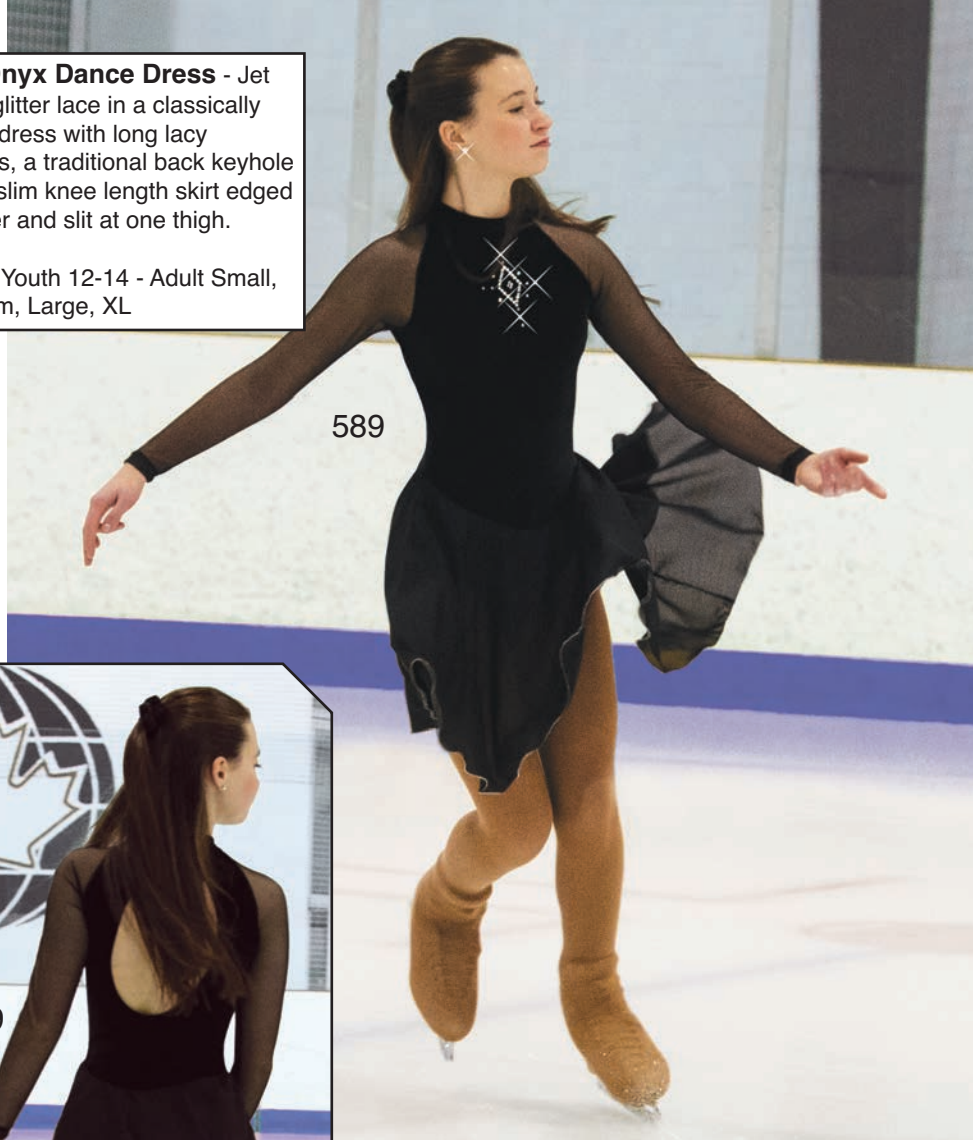
587 Purple Pearl

Dance Dress - This is a lovely dress with a shaped front neckline and low back crossed with slim straps accented by sparkling crystals. Single layer dance length georgette skirt. Sizes: Youth 10-12, 12-14 - Adult Small, Medium, Large



588

588 Onyx Dance Dress - Jet black glitter lace in a classically styled dress with long lacy sleeves, a traditional back keyhole and a slim knee length skirt edged in silver and slit at one thigh. Lined. Sizes: Youth 12-14 - Adult Small, Medium, Large, XL



589



589



588



589

589 Coronet Dance Dress - This is the essential black dance dress. It exudes timeless elegance with long mesh sleeves, a high neck with a diamond burst crystal accent and a traditional back keyhole. Sizes: Youth 10-12, 12-14 - Adult Small, Medium, Large, XL

590
Black



590
Red



591 Crystal Dance Dress -
Black velvet dress with a high neck accented by sparkling crystals and a traditional back keyhole. Matching single layer dance length skirt edged in silver. Sizes: Youth 12-14 - Adult Small, Medium, Large, XL

591



590
Black



590
Red



590 Classic Lace Dance Dress - Black or Red - Classic lace dress with elbow length sleeves, a jewel neckline and scoop back with a pair of crossed spaghetti straps. Lined. Sizes: Youth 10-12, 12-14 - Adult Small, Medium, Large, XL

591





601
Rich
Purple



601
Deep
Blue



601
Deep
Blue

**601 Once Upon a Time Dress -
Deep Blue or Rich Purple -**

Classic style velvet dress with long mesh sleeves, a georgette skirt edged in silver and a scattering of crystals. Glitter velvet trim along the sweetheart front and at the neck adds extra shimmer.

Sizes: Youth 12-14 - Adult Small, Medium, Large, XL

602 Oceanesque Dress - Sophisticated styling in an off-the-shoulder cut combine with rich textured teal tones in a shimmer flocked fabric to create a timeless look. Flattering slim skirt of georgette over shimmer mesh. Lined. Sizes: Youth 12-14 - Adult Small, Medium, Large

603 Lace on Lilacs Dress - Strapless styling in pretty glitter lace with layered tones of aubergine over lilac. The double georgette skirt wraps at one side and shows a hint of the lilac underskirt. Lined. Sizes: Youth 12-14 - Adult Small, Medium, Large



604 Lace Estate Dress - Wine or Navy Blue - Rich, deeply toned lace dresses feature long lacy sleeves and a lace bodice over glitter, a matching slim skirt and a high neck with a back zipper. Lined.
 Sizes: Youth 12-14 - Adult Small, Medium, Large, XL

604
Wine

605
Wine

604
Navy
Blue

604
Navy
Blue

604
Wine

605 Florentine Dress - Wine or Navy Blue - Classical styling with feminine details, these velvet dresses feature shirred mesh shoulders, a split mesh overskirt edged in gold and a gold trimmed princess cut bodice. Lined. Sizes: Youth 10-12, 12-14 - Adult Small, Medium, Large

605
Navy
Blue



605
Navy
Blue



605
Wine





606



606



607



607

606

Captivating Dress

- This eye-catching dress is sumptuously designed in a rich royal velvet with long glove inspired sleeves and skirt in beautifully textured burnout velvet. The simple, sophisticated off-the-shoulder style and myriad of sparkling crystals make this design flattering and feminine. Lined. Sizes: Youth 12-14 - Adult Small, Medium, Large

607

Art of the Bow Dress

- The combination of wedgewood blue glitter velvet and snow white glitter mesh in this dress gain soft sophistication from the high glitter neck and bow-style back detailing that accents the open back. Glove style sleeves with finger points and a double skirt add finishing touches. Lined. Sizes: Youth 10-12, 12-14 - Adult Small, Medium, Large

Crystal

Details

**608
Botanical
Lace Dress -
BlueBelle or Vine**

Green - Flatteringly styled dress with an off-the-shoulder cut, long lacy sleeves with finger points and a double layer georgette skirt with an attractive tulip hem edged in silver. The body is lined in a glitter knit for a bit of sparkle. Lined. Sizes: Youth 12-14 - Adult Small, Medium, Large

608
Blue
Belle

608
Blue
Belle

608
Vine
Green

608
Vine
Green



609
Black



609
Red



609
Royal

609 Lace Perfecta Dress - Black, Red or Royal Blue - Glitter lace dresses with dainty cap sleeves and a sweetheart front silhouetted against matching lycra lining. The trimmed V-neck at the front is echoed by the V-shape back and there is a matching double georgette skirt edged in silver. Sizes: Youth 12-14 - Adult Small, Medium, Large, XL



609
Black



609
Red



609
Royal

**610 Crystal Fanfare Dress -
Black Star or Navy Blue -**

Gorgeous velvet dress with an asymmetrical front design and high neck trimmed with silvery glitter accented by a fan of sparkling crystals. Long mesh sleeves with finger points, a back clip and a slanted overlapping georgette skirt add finesse.

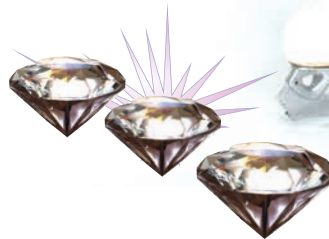
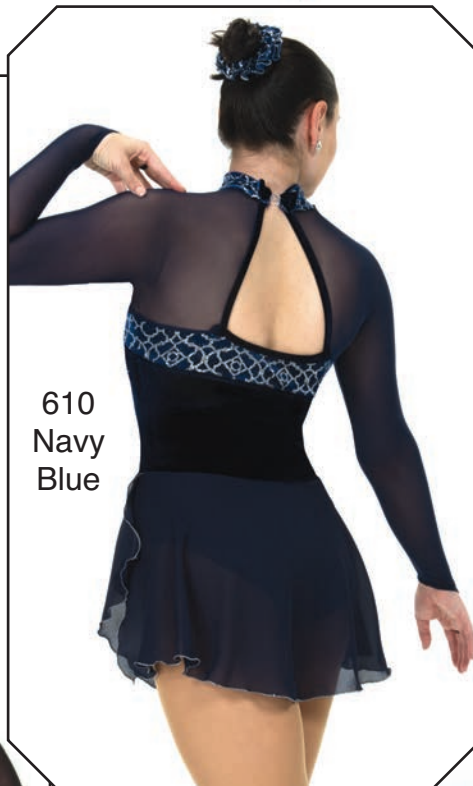
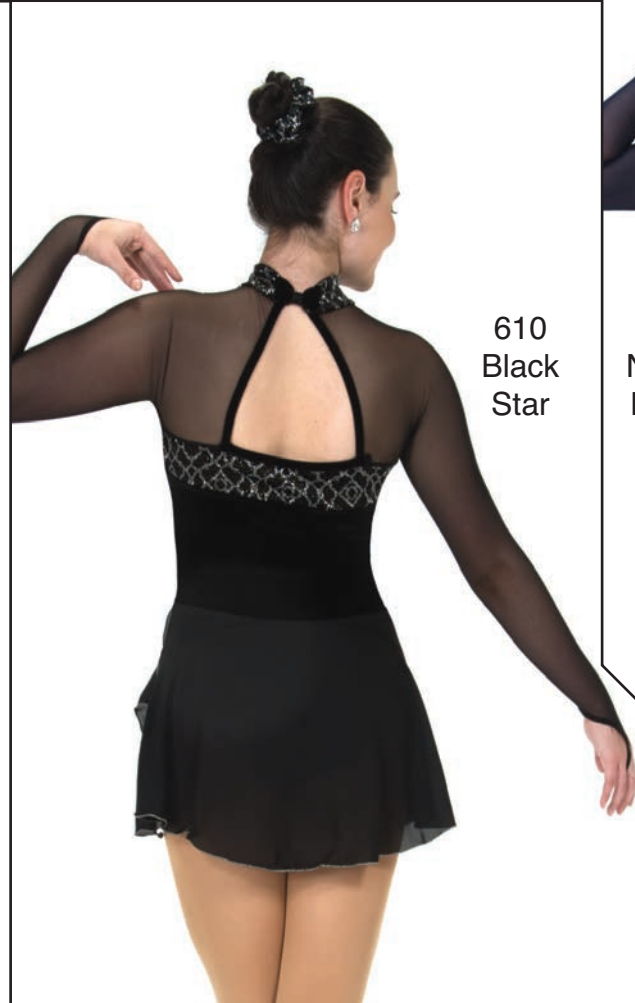
Sizes: Youth 12-14 -
Adult Small, Medium,
Large, XL

610
Navy
Blue

610
Black
Star

Crystal

Accents





611



611

**611
Chilled
Champagne
Dress**

- Lovely champagne coloured burnout velvet dress with gold shimmer glitter, a double skirt, a shaped front and classic keyhole back. Long Sleeves with finger points. Lined. Sizes: Youth 12-14 - Adult Small, Medium, Large

612
Ballet
Blush

612
Ice
Blue

Crystal
Accents

612
Ballet
Blush

**612
Satin Slipper
Dress - Ballet
Blush or Ice Blue -**

A satiny smooth lycra dress with a hint of sheen in soft pastels that reminds one of ballet point shoes. Flattering high neck with a back keyhole, long glitter mesh sleeves with finger points and a flowy double layer skirt. Scrolls of sparkling crystals add a touch of glamour. Lined. Sizes: Youth 12-14 - Adult Small, Medium, Large

613 Grayceful Dress - An elegant silver and gray combination of velvet, glitter, crystals and a flowy empire cut skirt. Off-the-shoulder styling with cross sleeve cutouts and a dipped back with crossed strap detailing. Sizes: Youth 12-14 - Adult Small, Medium, Large, XL

613

614



614

614 Sterling Rose Dress - A deep, rich claret red velvet dress with pewter grey accents and a charming antique silver glitter pattern of rose petals. Double georgette skirt of red over pewter to balance the shoulder accents. Square front neckline and gently dipped back. Sizes: Youth 12-4 - Adult Small, Medium, Large

613



615 Ruby Drop Dress - A wonderful cascading layered skirt of glitter over black and red georgette highlights this flattering dress of glitter velvet and shimmer mesh. Long mesh sleeves with finger points and a sweetheart neckline and keyhole back outlined in red add sophisticated panache. Sizes: Youth 12-14 - Adult Small, Medium, Large, XL

615



616



616



616 Sapphire on Silver Dress - Dark navy blue lace layered over pewter grey lycra is teamed with a matching charcoal lace and a liberal sprinkling of silver glitter. The side-swept skirt of navy over charcoal echoes the flattering cut of the bodice. Lined. Sizes: Youth 12-14 - Adult Small, Medium, Large

615





617
Purple
Mist



617
Cloud
Blue



617
Cloud
Blue

617 Misty Morning Dress - Purple Mist or Cloud Blue - A lovely slinky dress misted all over with silver glitter and styled with a shaped front, an open back with crystal accents on the straps, and a matching double layer georgette skirt that hitches up at one hip. Lined. Sizes: Youth 12-14 - Adult Small, Medium, Large

618 Sound of Swirls Dress -
Black/Purple or Black/Bue - Swirling
 glitter pattern set against jet black velvet
 catches the light and reflects in shades of
 silver and blues or purples. Long mesh
 sleeves with finger points, a back
 keyhole with crossed straps and a double
 layer georgette skirt add finesse. The V-
 shape front is lined for opacity. Sizes: Youth
 12-14 - Adult Small, Medium, Large

618
 Black/
 Purple



618
 Black/
 Blue

618
 Black/
 Blue



618
 Black/
 Purple





619



620



620 Ice & Indigo Dress - Navy blue dress with sweeping crystal blue fluted glitter mesh sleeves, curving crystal blue trim that meets the notched collar and a matching double skirt. Arcs of sparkling crystals add glitter and bling. Sizes: Youth 12-14 - Adult Small, Medium, Large



619



620

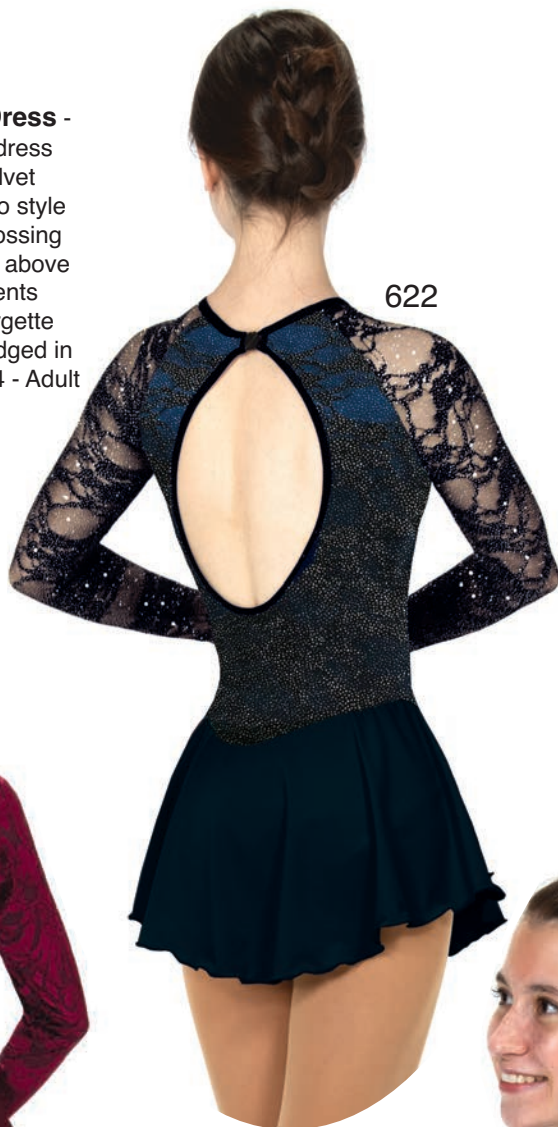
619 Roaring 20's Dress - Flocked and embossed lycra dress with silvery metallic accents and a fringe skirt over georgette add nostalgic notes to this design. Glove style sleeves, a V-neck and dipped back with parallel straps evoke the glamour and style of the 1920s. Sizes: Youth 12-14 - Adult Small, Medium, Large

621 Velvet Damask Dress -

A deep burgundy velvet dress with matching flocked velvet sleeves and a high bolero style back neck with zipper crossing over an elliptical keyhole above the sparkling crystal accents below. Double layer georgette skirt with a tulip hem edged in silver. Sizes: Youth 12-14 - Adult Small, Medium, Large



621



622



621



622

622 Midnight Fog Dress -

This dark, sophisticated dress features a starry, glittery black lace against a dramatic background of shaded lycra that fades from ocean blue to ink at the waist. Traditional georgette skirt. Sizes: Youth 12-14 - Adult Small, Medium, Large, XL



623



623



624

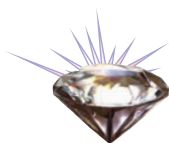
623 Snow Flute Dress - This dress is a confection of snow white velvet, silver glitter swirls and beautiful flared mesh sleeves dusted with silver. Double layer georgette skirt, a dainty teardrop mesh insert at the front and a classic back keyhole. Lined. Sizes: Youth 12-14 - Adult Small, Medium, Large

624 Icy & Lacy Dress - Traditional style details include a sweetheart front neckline, a scoop back with a bow-shaped accent and a matching georgette skirt, all done in a crystal blue lace with a sprinkling of silver glitter. Lined. Sizes: Youth 12-14 - Adult Small, Medium, Large

625 Fleur de Jardin Dress - A fresh, soft silvery sage colour lends an elegant shade to this flattering style. Beautifully embroidered and sequined mesh body with a jewel neckline, a V-back and a matching classic skirt. Lined. Sizes: Youth 12-14 - Adult Small, Medium, Large



626



626

Rich Rose-wood Dress -

Sophisticated mahogany lycra dress with a back statement keyhole, long mesh sleeves with finger points and a matching double layer skirt of mahogany brown over rose. A cascade of crystals flows from large clear stones at the neckline through petal pink and down to diminutive rose crystals at the waistline. Lined. Sizes: Youth 12-14 - Adult Small, Medium, Large

626



627

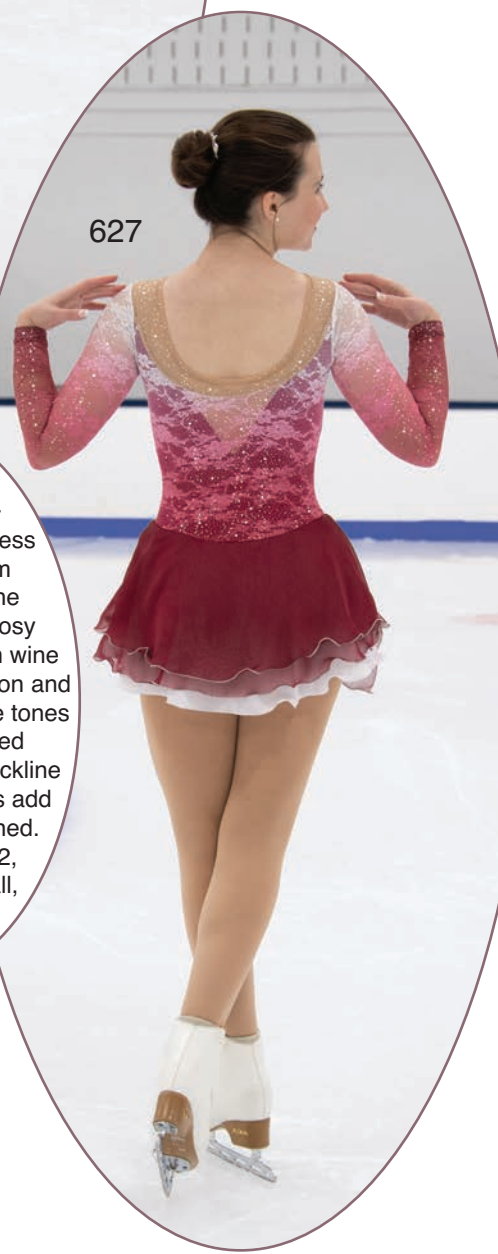


627

627

Shades of Shiraz Dress -

Pretty glitter lace dress shades softly from whisper white at the shoulders through rosy blush tones to a warm wine skirt with layers of chiffon and georgette that echo the tones of the dress. Shaped shoulder skimming neckline and long lacy sleeves add poise and polish. Lined. Sizes: Youth 10-12, 12-14 - Adult Small, Medium, Large



628 Lace Magnolia Dress - A soft pink shade of glitter lace in a flattering design that features a sweetheart front and low back with spaghetti straps and a classy back bow accent with a sparkling crystal center. Matching georgette skirt. Lined.
 Sizes: Youth 12-14 - Adult Small, Medium, Large



628

629 Burnished Bronze Dress - A rich brown dress brushed all over with bronze glitter. Accents include copper sequin trim at the V-neck, a shimmery bronze linen chiffon underskirt and a low back with a trio of straps. Lined. Sizes: Youth 12-14 - Adult Small, Medium, Large



629



629



628

630 Audrey Dress - A sophisticated style with a shaped V-neck front and back bow straps accented with crystal rings. The royal blue and silver glitter colours are echoed in the double layer skirt of black over royal georgette, which are edged in silver. Lined. Sizes: Youth 12-14 - Adult Small, Medium, Large, XL

630



631



631 Onyx On Iris Dress - This flattering style looks fabulous on every shape thanks to the classic high neck, back zipper, long lace sleeves with finger points and a traditional skirt of black over deep iris blue. Lined. Sizes: Youth 12-14 - Adult Small, Medium, Large, XL

630



631



632
Royal
Blue



**632 Crystals & Cutouts
Dress - Royal Blue or Ruby
Red**

Shimmery glitter mesh dresses with crystal accents along the V-neck and accenting the back straps. Long mesh sleeves with keyhole shoulders, a low back keyhole and double layer matching georgette skirt. Lined.

Sizes: Youth 12-14 - Adult
Small, Medium, Large

632
Ruby
Red

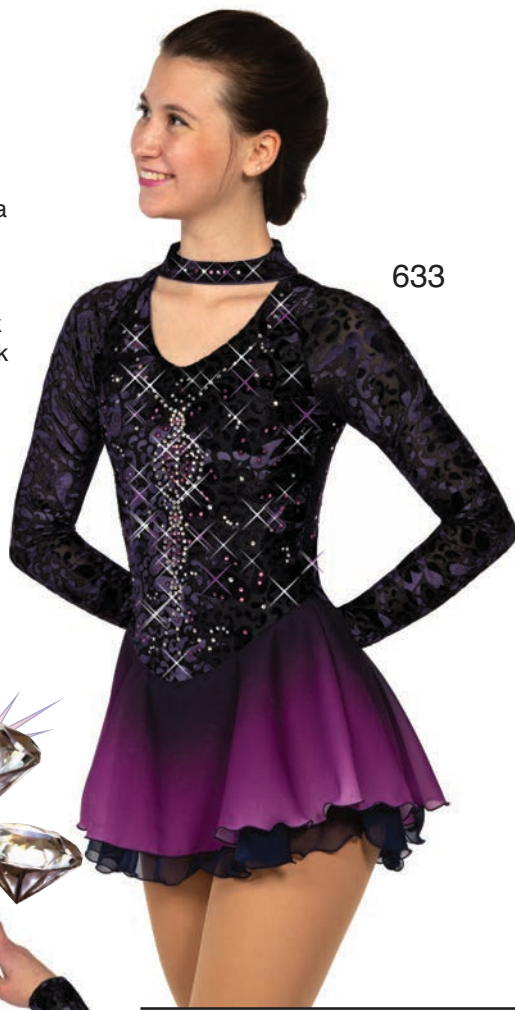


632
Royal
Blue



633 Poet's Ink Well

Dress - Deep plum purple flocked velvet dress layered with sparkling crystals and a dip-dyed skirt that shades from plum to orchid at the hem. Choker style front neck and deep V-shape back with strap accents. Lined.
Sizes: Youth 12-14 - Adult Small, Medium, Large



634
Emerald
Ice



634
Emerald
Ice





634
Cloud
Purple



635

635 Forest Sprite Dress -

Rich hunter green velvet dress is accented with gold glitter velvet along the shoulders and in the princess style cap sleeves. A flowy double layer empire style skirt and a scattering of sparkly gold crystals add the finishing touches. Sizes: Youth 12-14 - Adult Small, Medium, Large



634 Snow Fade Dress - Emerald Ice or Cloud Purple -

Delicate lace dresses drizzled in silver glitter that fade into soft white at the waist and wrists. Long sleeves with finger points and flowy double skirts add classic style. Lined. Sizes: Youth 10-12, 12-14 - Adult Small, Medium, Large

634
Cloud
Purple



635

636 Knightsbridge Dress - A wonderfully textured, gold shimmered flocked velvet dress with a bit of regal flair. Square neckline front and back, long fluted mesh sleeves and a layered skirt of sangria over cobalt georgette with gold edging. Lined.
Sizes: Youth 10-12, 12-14 - Adult Small, Medium, Large

636

636



637 Slipline Dress - Rich wine glitter shines against a deep bordeaux background in this on-trend, slim slip style dress. Lycra bodysuit lining and straps. Sizes: Youth 12-14 - Adult Small, Medium, Large

637



638

638 Empirical Rose Dress - Elegant and sophisticated rose print velvet bodice with a soft, flowy empire skirt, a shaped front neckline, back strap accents and a scattering of crystals.

Sizes: Youth 12-14 - Adult Small, Medium, Large

638

637



639 Rose Whirl Dress - Swirls of silver and pink glitter highlight this traditionally styled dress with an insert of mesh at the front and a myriad of crossed straps at the back. Matching georgette skirt. Sizes: Youth 12-14 - Adult Small, Medium, Large





640
Gold



640
Blue



640
Gold

640 Sequin Couture Dress - Gold or Blue - Glamorous sequin dress overlaid with black lace and a series of crossed spaghetti straps that also accent the open back keyhole. Choker style neck and back zipper, plus a layered skirt of black over contrasting chiffon. Lined.
 Sizes: Youth 12-14 - Adult Small, Medium, Large



641
Aubergine



641
Rose Mauve



641
Rose Mauve

641 Mysterious Dress - Aubergine or Rose Mauve - A dramatically styled dress with a crescendo of crystals and a flattering slim skirt. Lined. Sizes: Youth 12-14 - Adult Small, Medium, Large



641
Aubergine



642



642

642 Amethyst
Avalanche Dress - Jewel
toned lycra dress in deep
purple with a cascade of
crystals starting from large
clear stones at the neck to
tiny amethyst crystals at the
waist. Long mesh sleeves
with finger points, a classic
back keyhole and a double
layer georgette skirt. Lined.
Sizes: Youth 12-14 - Adult
Small, Medium, Large, XL

643



644



644

Ruby

Rising Dress -

Out of the coal black glitter mesh at the waist rises a vivid ruby red hue that warms the shoulders and neck of this flattering style. Long glitter mesh sleeves with finger points, an exclamation keyhole back and a shaped skirt all combine to create understated opulence. Lined.

Sizes: Youth 12-14

- Adult Small, Medium, Large

643

Black Over Blossoms

Dress - Black glitter lace gives this classic black and red dress an edgy update. The long lacy sleeves are set off by finger points and the open back is complimented by crossed straps. Sizes: Youth 12-14 - Adult Small, Medium, Large

643



644



645



646



645



**645
Pure Gold
Dress** - Gold velvet dress with a slanted front neckline and a sparkling crystal ring accent at one shoulder. Matching georgette skirt and back strap details. Lined. Sizes: Youth 12-14 - Adult Small, Medium, Large

646



**646
Diamond
Drizzle Dress** - Gold and silver diminutive diamond-patterned velvet dress with long glitter mesh sleeves, a marquis neckline and diamond drop back with crossed straps. Sizes: Youth 12-14 - Adult Small, Medium, Large, XL

647

647 Sangria Slide Dress - Black lace is layered over lycra that fades from deep sangria at the shoulders to midnight black at the waist, and then a liberal dusting of silver glitter adds shimmer. Classic round neck at the front dips into a V-shaped back. Lined. Sizes: Youth 12-14 - Adult Small, Medium, Large, XL

648

647

648

648 Ice Dew Dress - Sparkling crystals highlight this soft blue dress with a flattering slim skirt that is layered with a mesh over-skirt. Scoop neck front and back; lined. Sizes: Youth 12-14 - Adult Small, Medium, Large

649 Icephoria Dress -

A deep, rich orchid toned lycra dress featuring a dip-dyed georgette skirt that shades to a frosty blue at the hem, and opulent sparkling crystal accents in iridescent and blue at the front and back. Long mesh sleeves with finger points, a prism shaped front cutout and an open back with crossed strap detailing. Lined. Sizes: Youth 12-14 - Adult Small, Medium, Large



650 Demi-Pointe Dress - Jet Black or Ballet Pink - Soft velvet dresses with long mesh sleeves, layered tulip hem skirts, a crossed back and an accent of crystals along the mesh V-neck. Sizes: Youth 10-12, 12-14 - Adult Small, Medium, Large



650
Ballet
Pink



650
Ballet
Pink



650
Jet
Black



650
Jet
Black

651
Steel
Blue

651
Rose

651
Black

651
Steel
Blue

651
Black

652 Mirror Dress - Black or Royal - Supplex dresses with matching mesh accents at the front, scattered rhinestones and a georgette skirt. Crossed back straps; lined. Sizes: Youth 12-14 - Adult Small, Medium, Large

651 Overlace Dress - Black, Steel Blue or Rose - Lace dress with sweetheart front, back keyhole and a georgette skirt. Sizes: Youth 12-14 - Adult Small, Medium, Large, XL

653 Flora Lace Dress - Black or Soft Pink - Traditional style dresses perfect for everything from practice to tests and exams. Elbow length lace sleeves match the lace overlay in the body, and the jewel neckline scoops lower at the back to accommodate a trio of parallel straps. Lined. Sizes: Youth 10-12, 12-14 - Adult Small, Medium, Large

652
Black

652
Royal

652
Black

653
Black

653
Soft
Pink

653
Black

654
Deep
Blue

654 It's a Wrap Dress - Black or Deep Blue - Velvet dress with long flocked velvet sleeves and a matching slim cut skirt with a shaped back hem and a crossed wrap design back. Simple and elegant. Sizes: Youth 12-14 - Adult S, M, L, XL

654
Deep
Blue

655 Trilogy Dress - Black velvet dress with a georgette skirt and crossed and tapered back straps. Sizes: Youth 10-12, 12-14 - Adult S, M, L, XL

655

655

656 Diamante Dress - Black -

Velvet dress with long mesh sleeves, a scoop back with crossed spaghetti straps and an accent of sparkling crystals. Sizes: Youth 10-12, 12-14 - Adult Small, Medium, Large, XL

654
Black

656

656

654
Black

657 Resilience Dress - Black or Blue

- Classic, simple styling makes this dress practical and easy to wear. A high neck, modest back keyhole and matching double layer skirt are complimented by sparkling crystals at the front.

Sizes: Youth 10-12, 12-14 - Adult Small, Medium, Large, XL

657
Blue



657
Blue



657
Black



657
Black





660



661
Garnet
Red



661
Petal
Purple

660 Shadow Shimmer Dress - A luxe black velvet dress with a lovely accent of purple glitter. Simply styled with long mesh sleeves, a shaped front neckline, scoop back with crossed straps and a matching glitter velvet skirt. Sizes: Youth 6-8, 8-10, 10-12, 12-14 - Adult Small

661 All A-Swirl Dress - Garnet Red or Petal Purple - Warm velvet dresses with swirling glitter over the long sleeves and body. Classic styling with a high front neckline, scoop back with crossed straps and a matching georgette skirt. Sizes: Youth 6-8, 8-10, 10-12, 12-14



660



661
Garnet
Red



661
Petal
Purple

662 Richesse in Red Dress -

A sumptuous combination of red velvet and a sophisticated swirl glitter pattern in black and gold. Asymmetrical styling with mesh sleeves and a slanted overlapping front skirt. Back keyhole and slanted back straps.

Sizes: Youth 6-8, 8-10, 10-12, 12-14 - Adult S

662



663



662



663



663 North Star Dress -

A lovely colour combination of jet black velvet and rich royal blue glitter highlights make this dress a cut above the ordinary. The starry blue glitter is accented by a royal blue georgette skirt and royal trim around the sleeve cuffs, scoop neck and back straps.

Sizes: Youth 6-8, 8-10, 10-12, 12-14 - Adult S



664 Sky
Blue



664
Soft Iris



664 Soft
Iris



664 Sky
Blue

664 Scintillating Dress - Sky Blue or Soft Iris - Classically styled velvet dresses with swirls of icy silver glitter, long mesh sleeves, a scoop back with a trio of slanted straps and a matching georgette skirt.
 Sizes: Youth 4-6, 6-8, 8-10, 10-12, 12-14 - Adult Small



665

665 Princess Dress - Dainty silver glitter swirls over the pink velvet body of this traditional style dress. Long mesh sleeves curve into the scoop neck, and a matching georgette skirt completes the look. Sizes: Youth 4-6, 6-8, 8-10, 10-12, 12-14



667

667



668

668 Ruby Rose Dress - A deep rose wine dress with asymmetrical styling, long mesh sleeves and an intricate rose pink glitter pattern. Sizes: Youth 6-8, 8-10, 10-12, 12-14 - Adult Small



665



668





669
Black



669
Royal
Blue



669
Black



669
Royal
Blue



669
Deep
Purple



669
Deep
Purple

669 Diamond Chips Dress - Black, Royal Blue or Deep Purple - Textured velvet dresses in deep jewel tones with an allover scattering of silver glitter. Long mesh sleeves, a matching georgette skirt and pretty back straps with a crystal clasp add pizzazz. Sizes: Youth 6-8, 8-10, 10-12, 12-14 - Adult S



670

670 Swoop Dress -

Swoops of sapphire, aquamarine and silver highlight this classically styled dress. Long mesh sleeves, a scoop back with cross detail and georgette skirt finish the look.

Sizes: Youth 6-8, 8-10, 10-12, 12-14 - Adult Small



670



671

671 Purple Papillon Dress -

A pretty concord purple velvet dress featuring a square neckline, long mesh sleeves, a matching georgette skirt and a scattering of pretty silvery butterflies.

Sizes: Youth 6-8, 8-10, 10-12, 12-14 - Adult Small



671



672
Emerald
Green



672
Jet
Black

**672
Starshine
Dress - Jet
Black, Royal Blue,
Emerald or Deep
Fuchsia** - Soft velvet
dresses featuring sparkling
crystals at the neck, a back
keyhole with crossed straps
and long glittery mesh
sleeves and matching top
skirts. Sizes: Youth 6-8,
8-10, 10-12, 12-14 -
Adult S



672
Jet
Black



672
Royal
Blue



672
Royal
Blue



672
Deep
Fuchsia

673 Frosty Air Dress - Wintergreen, Frost Blue or Snow Cherry -

The luxuriously soft icy velvet of these dresses pairs perfectly with snowy white glitter mesh that sweeps across the shoulders and down the long sleeves. Crystal accents add sparkle to the front, and an elliptical keyhole adds interest to the back. Sizes: Youth 6-8, 8-10, 10-12, 12-14

673
Winter
Green



673
Snow
Cherry



673
Frost
Blue



673
Winter
Green



673
Snow
Cherry



673
Frost
Blue



Fleece Dresses



674
Ocean
Blue

1203 Blue
Crystal
Necklace



674
Crystal
Blue

674 Fancy Fleece Dress - Ocean Blue, Crystal Blue, Deep Iris, Wine or Black Rose - A classic style featuring cozy fleece that is brushed on the inside for softness and extra warmth, yet is smooth and flattering on the outside. Impeccably paired with gorgeous glitter velvet skirts and a glint of glitter at the neck. The neck is lined in soft velvet for comfort and the back is finished with a zipper to keep out the cold. Sizes: Youth 4-6, 6-8, 8-10, 10-12, 12-14

1203 Clear
Crystal
Necklace

674
Iris
Purple



1203 Crystal Skate Necklace - Clear, Blue, Pink or Rose Gold



674
Black
Rose



674
Wine

674 Fancy Fleece Dress - Ocean Blue, Crystal Blue, Deep Iris, Wine or Black Rose - A classic style featuring cozy fleece that is brushed on the inside for softness and extra warmth, yet is smooth and flattering on the outside. Impeccably paired with gorgeous glitter velvet skirts and a glint of glitter at the neck. The neck is lined in soft velvet for comfort and the back is finished with a zipper to keep out the cold. Sizes: Youth 4-6, 6-8, 8-10, 10-12, 12-14



674
Wine

1203 Pink
Crystal
Necklace



1100
Black
Gloves

674
Black
Rose



675



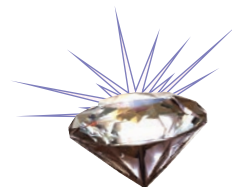
675



675



675 Crystal Penguin Dress - A crystal skating penguin sparkles on this black velvet dress with long sleeves, a twinkle velvet skirt and twinkle velvet trim around the neck and scoop back. Sizes: Youth 4-6, 6-8, 8-10, 10-12, 12-14





676
Iris
Purple



676
Royal
Blue

676 Ice Bunny Dress - Iris Purple or Royal Blue - A sparkling crystal bunny glides across the front of this velvet dress. The traditional style skirt is matching twinkle velvet and the scoop back with crossed straps is also trimmed in twinkle velvet.
 Sizes: Youth 4-6, 6-8, 8-10, 10-12, 12-14

677 Brite & White Dress - Sun Yellow, Fuchsia Pink or Royal Blue - Clean snow white glitter lace is paired with crisp, bright coloured laces and cut in a pretty sweetheart front and dipped V-back. Long glitter lace sleeves and a glitter lace top skirt add classic touches. Lined. Sizes: Youth 6-8, 8-10, 10-12, 12-14



677
Sun
Yellow



677
Fuchsia
Pink



677
Fuchsia
Pink



677
Sun
Yellow



677
Royal
Blue



677
Royal
Blue



677
Sun
Yellow



678



678

678 Pinkability Dress - Pale ballet pink velvet with swirls of silver and rose glitter set off by accents of shimmering rose pink velvet. This lovely pink confection features finger points, a double layer georgette skirt and a shaped neckline with a locket style back highlighted by a cluster of pink crystals. Lined.
Sizes: Youth 6-8, 8-10, 10-12, 12-14

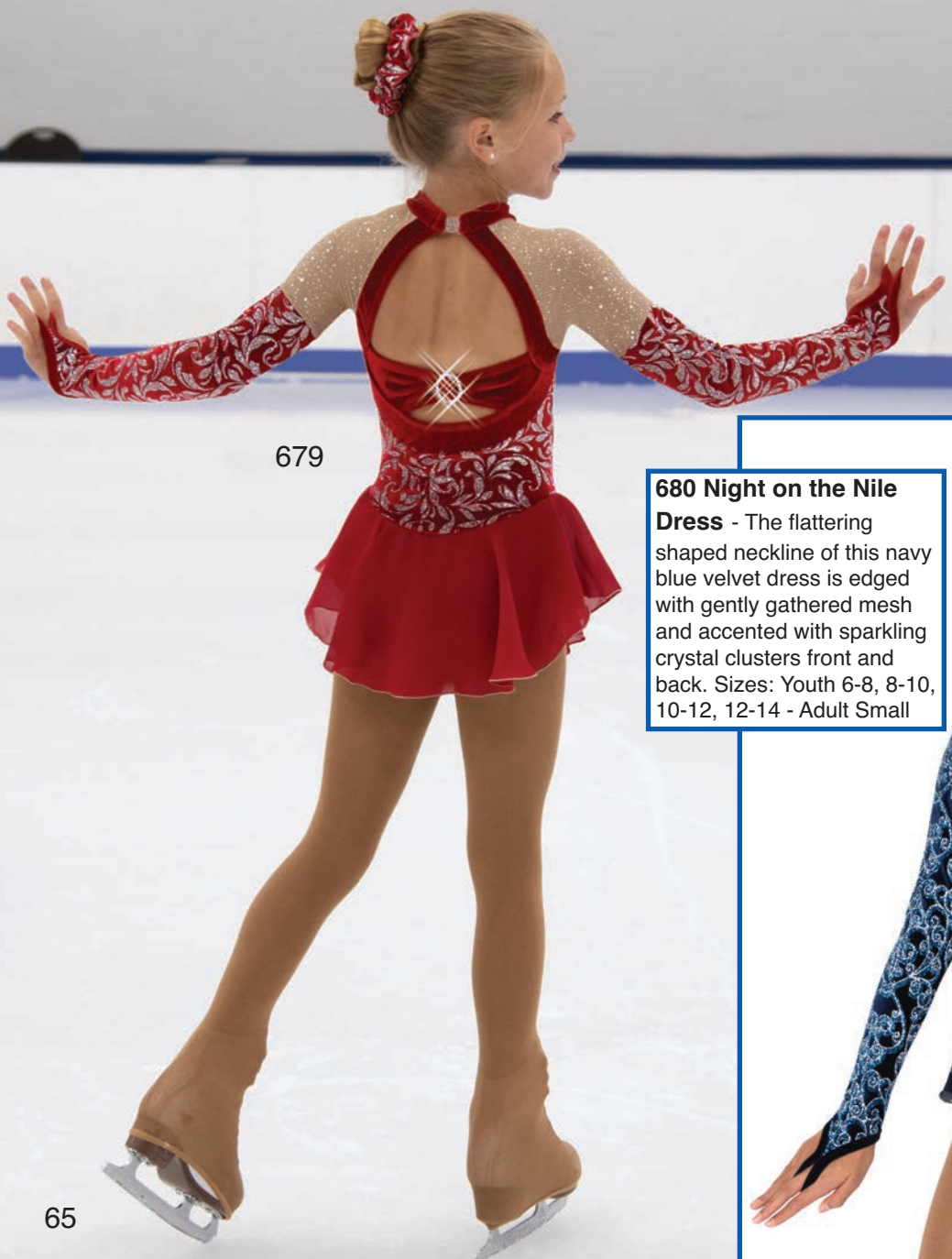
679 Roxy in Red Dress -

This ruby toned velvet dress is drizzled in silver glitter and styled with classic details including a sweetheart front neckline, a flowy georgette skirt edged in silver, a bow back with a crystal center and glove inspired sleeves with finger points. Sizes: Youth 6-8, 8-10, 10-12, 12-14



679

680



679

680 Night on the Nile

Dress - The flattering shaped neckline of this navy blue velvet dress is edged with gently gathered mesh and accented with sparkling crystal clusters front and back. Sizes: Youth 6-8, 8-10, 10-12, 12-14 - Adult Small

680





681 Queen of Hearts Dress - Red shimmer velvet dress with a diamond shaped front design, long mesh sleeves with finger points, a diamond shaped back keyhole with a gold accent where the straps cross, and a heart shaped hem on the double skirt. Sizes: Youth 6-8, 8-10, 10-12, 12-14 - Adult Small



681



681

682 By Royal Appointment

Dress - This classically styled dress features luxurious sapphire and gold scrolling glitter, a shaped neckline, finger points and a double layer skirt edged in gold. Sizes: Youth 6-8, 8-10, 10-12, 12-14 - Adult Small

682

683 Roses of the Nile Dress

- A deep rose pink velvet dress with swirls of pink and silver glitter, long sleeves with finger points and a pretty gathering of mesh along the shaped neckline. Sizes: Youth 6-8, 8-10, 10-12, 12-14

683

683

684

682

685 Summer Rose Dress -

Reminiscent of warm summer garden parties, this dress is printed with gold and pink swirling glitter and accented by pink ribbon rosettes at the front. Long glitter mesh sleeves and a glitter velvet top skirt adds extra finesse. Sizes: Youth 6-8, 8-10, 10-12, 12-14



685

686 Velvet Cloak Dress -

Rich plum velvet is dusted with gold glitter and teamed with embroidered gold trim and champagne coloured tailored accents. Back zipper and mandarin collar add classic charm. Sizes: Youth 6-8, 8-10, 10-12, 12-14



686

684 Ore D'Or Dress -

Deep purple mesh is tastefully embroidered with gold sequins and teamed with hammered gold velvet trim to create a sophisticated style. A traditional style back keyhole and a double georgette skirt edged in gold complete the look. Lined. Sizes: Youth 6-8, 8-10, 10-12, 12-14 - Adult S



684



685



686

68



687
Pastel
Blue

**687 Sequinette Dress -
Pastel Blue or Ballet Pink**

- Sparkling iridescent sequin
lace dresses in soft colours
with glove look sleeves and
skirts in matching lycra. A
scoop back with crossed
spaghetti straps adds extra
interest. Lined.

Sizes: Youth 6-8, 8-10, 10-12,
12-14



687
Pastel
Blue

687
Ballet
Pink

687 Sequinette Dress - Pastel Blue or Ballet Pink - Sparkling iridescent sequin lace dresses in soft colours with glove look sleeves and skirts in matching lycra. A scoop back with crossed spaghetti straps adds extra interest. Lined.
Sizes: Youth 6-8, 8-10, 10-12, 12-14

688 Beautiful Blue Dress - A gorgeous ice blue velvet dress with shimmering silver glitter, long mesh sleeves, a double layer georgette skirt and a locket style back keyhole with a crystal accent. Lined.
Sizes: Youth 6-8, 8-10, 10-12, 12-14

688

687
Ballet
Pink

688



689

689 Sparkling Wine

Dress - Rich, crushed velvet in a deep wine shade is set off by sparkling accent trim, shimmer mesh sleeves and a double layer skirt of linen chiffon over georgette. A scattering of crystals adds a bit of bling. Sizes: Youth 6-8, 8-10, 10-12, 12-14 - Adult Small

690 Empress Dress - Flowy double layer empire style skirts enhance this glitter velvet dress. The high front neck, long glove style sleeves with finger points and pretty keyhole back add to the regal look. Sizes: Youth 6-8, 8-10, 10-12, 12-14 - Adult Small



690



689



690

691 Empire Wines Dress - Flattering empire design dress in rich deep wine glitter velvet with off-the-shoulder styling, long mesh sleeves with finger points, a flattering back keyhole and a flowy double layer skirt edged in silver.
 Sizes: Youth 6-8, 8-10, 10-12, 12-14 - Adult Small



691

692



692 Peruvian Purple Dress - Rich deep purple velvet enhanced by scrolling silver filigree patterned glitter creates a fabulous look when teamed with shirred mesh at the shoulders and along the V-back. A double layer georgette skirt edged in silver and long sleeves with finger points add polished details. Sizes: Youth 6-8, 8-10, 10-12, 12-14 - Adult Small

691



692



693



**693
Sterling
Blue Dress -**
Crushed velvet dress with glitter mesh sleeves, a high neck with back keyhole and glittering silver trim around the front, back and waist. Double layer georgette skirt edged in silver. Sizes: Youth 6-8, 8-10, 10-12, 12-14

**694
Ice & Sun
Dress - Ice Blue
or Sun Yellow -**

Dreamy crystallized dresses in lycra with a sweetheart front, V-back with a pair of crossed straps, long glitter mesh sleeves and a matching top skirt, plus a beautifully detailed accent of sparkling crystals. Lined. Sizes: Youth 6-8, 8-10, 10-12, 12-14



694
Ice
Blue



694
Ice
Blue



693



Crystal



Accents





694
Sun
Yellow



695

694

**Ice & Sun
Dress - Ice Blue
or Sun Yellow -**

Dreamy crystallized dresses in lycra with a sweetheart front, V-back with a pair of crossed straps, long glitter mesh sleeves and a matching top skirt, plus a beautifully detailed accent of sparkling crystals. Lined. Sizes: Youth 6-8, 8-10, 10-12, 12-14

694
Sun
Yellow



695

**Blue
Buttercup**

Dress - Blue toned glitter lace blends into lemon yellow at the waist and underskirt. High neck with classic back keyhole, a triple skirt edged in silver and full lining. Sizes: Youth 6-8, 8-10, 10-12, 12-14 - Adult Small



695

696 Peony Petals Dress

- This deep fuchsia glitter velvet dress is styled with long mesh sleeves ending in finger points, a delicately scalloped neckline and a layered skirt with a petal hem. Sizes: Youth 6-8, 8-10, 10-12, 12-14

**697 Peacock Plume Dress - A**

black velvet dress with turquoise glitter swirls, long black mesh sleeves with finger points and a triple layer flame cut skirt of glitter over mesh. Sizes: Youth 6-8, 8-10, 10-12, 12-14 - Adult Small

697



698 Tiffany Twist Dress - This glitter velvet dress features a flattering sweep of mesh across the shoulders, long glove style sleeves with finger points and a triple layer princess style skirt. Lined. Sizes: Youth 6-8, 8-10, 10-12, 12-14

698



699 Tickled Pink Dress - A playful combination of fuchsia, light pink and silver creates a lovely layered confection of a dress to tickle your fancy. Long shimmer mesh sleeves, a classic back keyhole and triple skirt of glitter velvet over georgette add the icing on the cake. Sizes: Youth 4-6, 6-8, 8-10, 10-12, 12-14

699



699



698



699



700 Snow in the Sky Dress - The snow white trim around the sweetheart neckline and snowy white underskirt set this sky blue velvet dress apart from all the others. The silver glitter adds shimmer and shine. Sizes: Youth 4-6, 6-8, 8-10, 10-12, 12-14



700



701

701 Shamrock Shake Dress - The white and green shaded lace in this style is overlaid with silver glitter and cut in a flattering design with a high neckline, long lacy sleeves, a keyhole back and a matching triple georgette skirt. Lined. Sizes: Youth 6-8, 8-10, 10-12, 12-14



700



701

702 Bluedazzle Dress - A lovely shade of blue dressed up with glitter velvet trim, long mesh sleeves with finger points, a double layer georgette skirt with a removable back bow above vertical ruffles and a scattering of crystals over the velvet body. Lined. Sizes: Youth 6-8, 8-10, 10-12, 12-14

702



702



702



703 Lake Geneva Dress -
 Lacy royal blue dress with a lagoon blue holographic lining, plus matching lagoon blue trim around the squared neckline and along the dropped key-hole back. The georgette skirt is lined in lagoon blue and the cap sleeves are finished with lagoon blue for extra detail. Lined. Sizes: Youth 6-8, 8-10, 10-12, 12-14

703



704



704 Blushing Blue Dress -
 The beautiful blend of colours set this dress well above the ordinary. The bodice shades from lovely pink at the neck to a soft sky blue at the waist, all overlaid with misty white glitter lace. The scoop neck, dipped back with crossed straps, triple layered skirt and sleeve ruffles all lend dreamy touches. Lined. Sizes: Youth 6-8, 8-10, 10-12, 12-14

703



704



705
White
Opal



**705 Sequin Sea Queen Dress -
Royal Blue or Opal White** - This luxe
velvet dress features luminous swirls of
iridescent opal sequins. The dress is
simply styled with long mesh sleeves, a
scoop back with crossed straps and a
triple layer georgette skirt that echoes the
shades of the shimmering sequins.
Sizes: Youth 6-8, 8-10, 10-12, 12-14

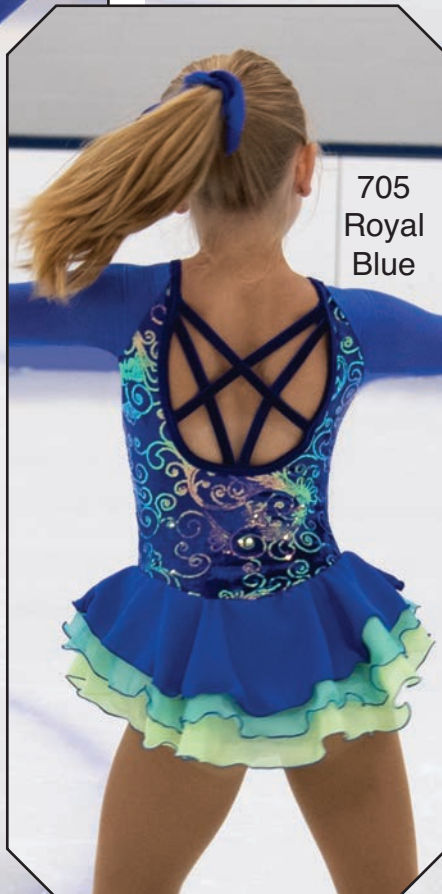
705
Royal
Blue



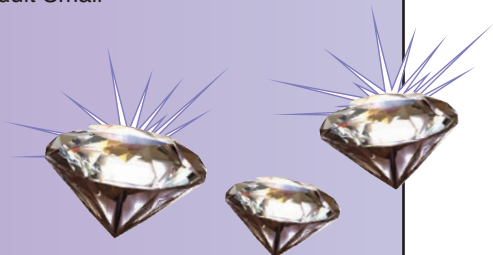
705
White
Opal



705
Royal
Blue



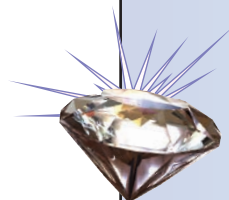
706 Clear Night Dress - A shimmer velvet dress with twinkling silver and turquoise highlights, a layered skirt of flocked mesh, georgette and organdy. Sparkling crystals accent the front and the scoop back features elegant crossed back straps. Sizes: Youth 6-8, 8-10, 10-12, 12-14 - Adult Small



706



706





707
Soft
Iris



707
Royal
Blue



707
Tiffany
Blue

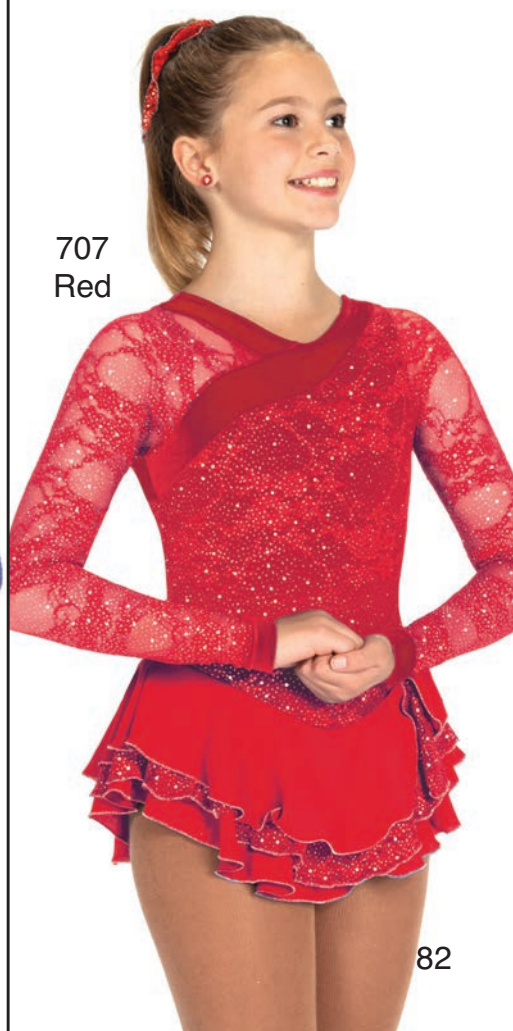
707 Romantic Lace Dress - Soft Iris, Royal Blue, Red or Tiffany Blue - Our ever popular glitter lace is now available in an updated design with long, lacy sleeves, a triple layer skirt and an asymmetrical wrap-inspired neckline trimmed in matching velvet. Lined. Sizes: Youth 6-8, 8-10, 10-12, 12-14



707
Soft
Iris



707
Royal
Blue



707
Red

708

709 Asters After Rain

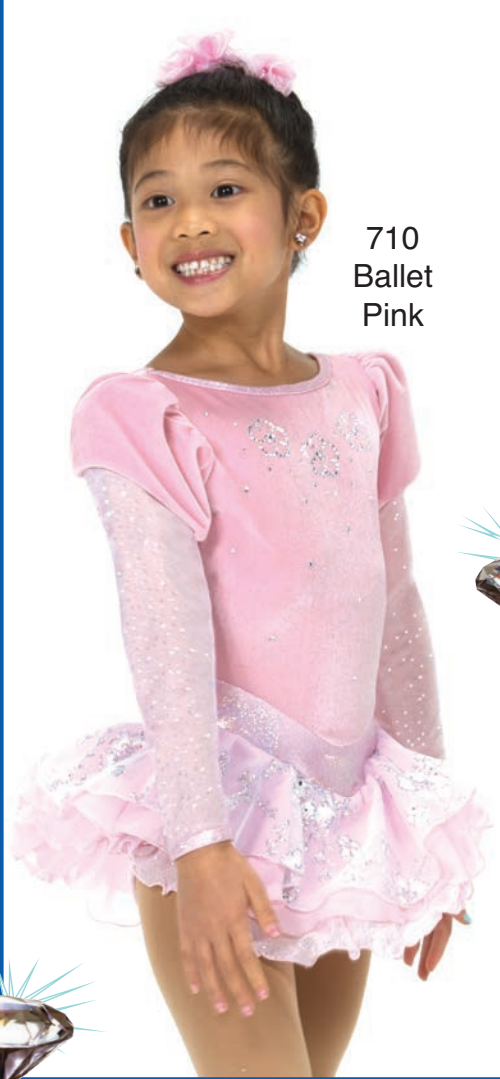
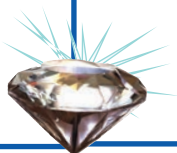
Dress - Entirely confected from glitter mesh, this feminine dress shades from light camellia at the shoulders to a darker orchid tone at the hem of the sheer overskirt and at the tips of the finger point sleeves. Fully lined. Sizes: Youth 6-8, 8-10, 10-12, 12-14 - Adult Small

709

708 Savoy Dress - This show stopping creation is ritzy and glamorous and hits all the right notes. Black velvet is swirled with glittering fuchsia and styled in a halter design cut with a tasteful collar, long glove-look sleeves, a shaped fuchsia waist-band and a filmy double layer skirt. Sizes: Youth 6-8, 8-10, 10-12, 12-14 - Adult Small



710
Snow
White



710
Ballet
Pink



710 Ice Petals Dress - Snow White, Ballet Pink or Powder Blue - Soft velvet dresses with pretty short puff sleeves above glitter mesh, a triple layer skirt of crystallized mesh over georgette and a trimmed waist with hologram shimmer. A locket style back keyhole and trio of sparkling crystal flowers at the front add finesse. Lined. Sizes: Youth 6-8, 8-10, 10-12, 12-14

710
Powder
Blue



710
Snow
White



710
Ballet
Pink



313 Single Georgette Skirt - Black, Tiffany, Navy or Fuchsia- Traditional style georgette with velvet panty and elastic waist. This skirt is a little shorter and more shaped than style 315. Sizes: Youth 4-6, 6-8, 8-10, 10-12, 12-14 - Adult Small, Medium, Large



304 Triple Ribbon Skirts - Grape, Ocean, Royal or Rose - Georgette skirts with a ribbon of contrasting colour layered between a black top skirt and white underskirt. Matching black panties and an elastic waist for a comfortable fit. Sizes: Youth 6-8, 8-10, 10-12, 12-14 - Adult Small



305 Double Georgette Skirts - Black/Sky, Black/Blush, Black/Purple, Blush Pink/White, Crystal Blue/White, Black/White - Traditional style skirts with a double helping of flowy georgette, matching velvet panties and an elastic waist for a comfortable no tug fit. Sizes: Youth 6-8, 8-10, 10-12, 12-14 - Adult Small, Medium





**316
Purple**



**316
Pink**



**316
Black**

**316 Lycra Single Skirt -
Purple, Pink or Black -**

Traditional style skirts with built-in
panties and an elastic waist, all in
premium four way stretch lycra.
Sizes: Youth 6-8, 8-10, 10-12,
12-14 - Adult S, M, L (XL in black
only)

315 Classic Black Georgette Skirt -

Original fit georgette skirt with a slightly
longer length and straight hem. Sizes:
Youth 8-10, 10-12, 12-14 - Adult S, M, L, XL

306 Ruffle Back Skirts - Evening Blue or Sunrise Pink -

Classic black georgette skirts with layered
back skirts. Matching velvet
panties and elastic waists. Sizes: Youth 6-8, 8-10, 10-12, 12-14 - Adult S



**315
Black**



**306
Evening
Blue**



**306
Sunrise
Pink**

314 Frost Glam Skirts - Bluebell, Black, Purple or Navy - Velvet skirts embossed with silver/jewel glitter and accented by a
georgette underskirt. Solid velvet panties and an elastic waist. Sizes: Youth 6-8, 8-10, 10-12, 12-14 - Adult Small, Medium, Large



**314
Bluebell/
White**



**314
Black/
Pink**



**314
Purple/
Violet**



**314
Navy/
Blue**

312 Two Tier Skirts - Pink, Purple, Crystal Blue or Black - Velvet skirts in a traditional cut with pretty tiers of georgette.
Matching panties and an elastic waist for a comfortable fit. Sizes: Youth 6-8, 8-10, 10-12, 12-14 - Adult Small, Medium



**312
Pink**



**312
Purple**



**312
Crystal Blue**



**312
Black**



311 Twinkle Velvet Skirts - Black, Sky Blue, Soft Purple, Bright Pink, Royal Blue, Emerald - Traditional style skating skirt in shimmery velvet with built-in solid velvet panties and an elastic waist for a comfortable fit. Sizes: Youth 6-8, 8-10, 10-12, 12-14 - Adult S, M, L



317 Glitter Tie Dye Skirts - Purple or Ocean - Fun and sparkly skirts feature tie dye supplex skirts, lycra panties and an elastic waist. Sizes: Youth 6-8, 8-10, 10-12, 12-14 - Adult Small



503 - 513 Double Back Skirts - As Shown - Fun & colourful lycra skirts with print top skirt and contrasting back underskirt. Lycra panties & elastic waist for a comfortable fit. Sizes: Youth 6-8, 8-10, 10-12, 12-14 - Adult Small





318
Royal

318
White

318
Purple

318
Black

318 Swirl Skirts - Royal, White, Purple or Black - Velvet skirts in a traditional cut with swirl glitter. Matching panties and an elastic waist for a comfortable fit. Sizes: Youth 6-8, 8-10, 10-12, 12-14 - Adult Small, Medium, Large

514 Shimmer Velvet Box Skirt - Silver, Black or Gold -

Metallic shimmer velvet skirt with side slits, high waist, and matching solid panties. Sizes: Youth 8-10, 10-12, 12-14 - Adult S, M, L



514
Silver



514
Black



514
Gold



515
Black



S553

515 Black Velvet Box Skirt - Black velvet with side slits, matching panties and an elastic waist. Sizes: Youth 6-8, 8-10, 10-12, 12-14 - Adult S, M, L, XL

S553 SnowSkate Crystal Skirt - A slim, shaped skirt with sparkling crystals. Sizes: Youth 6-8, 8-10, 10-12, 12-14 - Adult S



516
Navy Blue

516
Black

516 Lycra Box Skirts - Black or Navy Blue - Original fit box skirts with a slightly longer length, elastic waist & side slits. Sizes: Youth 6-8, 8-10, 10-12, 12-14 - Adult Small, Medium, Large, XL

517 Faux Wrap Skirt - Black, Blue or Plum -

Supplex high waist skirts with wrap style georgette. Sizes: Youth 10-12, 12-14 - Adult S, M, L



517
Black



517
Blue



517
Plum



1819 Colourblade Headbands



1317 Fleece Blade Headbands - Black, Pink, Red, Royal, Purple & Sky



1318 Crystal Skate Headband - Black, White, Pink



1830 - 1838 Print Lycra Gripper Headbands



1817 Supplex Headbands

1818 Black Crystal Headband - Black supplex



331



299

345 Mesh Masterpiece Skirt - Double layer mesh skirt of print over black with black panties and an elasticized waist. Sizes: Youth 8-10, 10-12, 12-14 - Adult Small, Medium, Large



345



340



331 Flocked Velvet Wrap Skirt - Traditional style wrap skirt in a soft flocked velvet with sequin accents. Sizes: Youth or Adult



297



301 Regular Length Wrap

340 Mesh Clip Skirt - Slim, sheer mesh overskirt on a slim lycra band with a clip closure for easy on/off over leggings, catsuits or bodysuits. Sizes: Youth 8-10, 10-12, 12-14 - Adult S, M, L

308 Black Dance Skirt - Black georgette dance length skirt features front slit, asymmetrical dipped velvet yoke & panty. Sizes: Youth M/L - Adult S/M, M/L, L/XL

334 Glitter Paisley Regular Length Wrap

WRAP SKIRTS: Styles 301, 310 & 330 are Black Georgette; 334 & 335 are Chiffon - Sizes: Youth One Size - Adult One Size



335 Daisy Dance Wrap



330 Double Dance Wrap



310 Dance Wrap



308 Dance



297

301



297



298



298



300B

310



299

331



299

331

Bodysuits:
297 Shirred Supplex Bodysuit - Black supplex bodysuit with gentle gathers at bust. Sizes: Youth 10-12, 12-14 - Adult S, M, L, XL
298 Crystal Bodysuit - Black supplex bodysuit with a scattering of sparkling crystals. Sizes: Youth 10-12, 12-14 - Adult S, M, L
299 Mesh Dot Bodysuit - Supplex bodysuit with fabulous mesh dot long sleeves and back keyhole. Sizes: Youth 8-10, 10-12, 12-14 - Adult S, M, L
300B Long Sleeve Velvet Bodysuit - Black velvet bodysuit with high neck and back keyhole. Sizes: Youth 8-10, 10-12, 12-14 - Adult S, M, L
300S Low Cut Supplex Bodysuit - Traditional black supplex bodysuit with a modest lower cut panty-line. Sizes: Youth 10-12, 12-14 - Adult S, M, L, XL



299



300S

335



300S

335



300S

90



286
Navy



286
Black



286
Navy



286
Black

286 Triple Bow Back Catsuit - Navy Blue or Black - Supplex catsuits with pretty mesh front inserts, spaghetti straps and a set of triple mesh bows running down the back, each highlighted by a sparkling crystal centre. A shelf bra provides extra support and coverage. Sizes: Youth 10-12, 12-14 - Adult S, M, L



287
Ocean



287
Royal



287
Ocean



287
Violet



287
Royal



287
Violet

287 Ice Crystals 1-Piece - Violet, Ocean or Royal - Create a slim silhouette in this sleek black 1-piece with a band of jewel tone colour dripping icicle style crystals. The contrast lycra also edges the V-neckline and highlights the bustline under the black glitter lace that runs into the long sleeves. Lined. Sizes: Youth 12-14 - Adult S, M, L



289

289

290

290

289

289 Glitter Lace 1-Piece - Black velvet 1-piece with long glitter lace sleeves, a seamless sweetheart front and traditional back key-hole for a timeless and classical look. Built-in shelf bra. Sizes: Youth 8-10, 10-12, 12-14 - Adult S, M, L, XL

290 High Neck Catsuit - Classy black catsuit with a high neck, back zipper and a scattering of crystals at the neck and ankles. Sizes: Youth 8-10, 10-12, 12-14 - Adult XS, S, M, L



291
Burgundy

291
Black

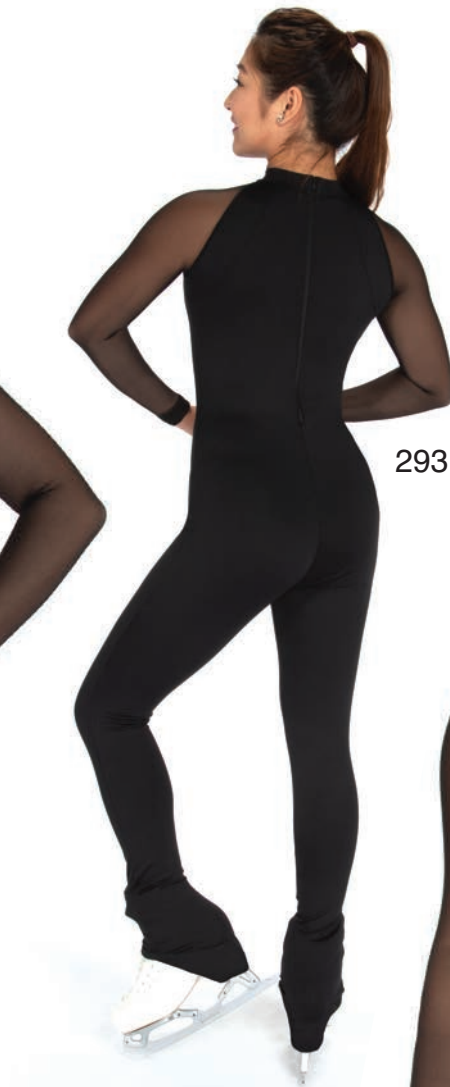
291 Velvet Burnout Catsuit - Black or Burgundy - A stunning mix of burnout velvet across the shoulders, solid velvet upper bodice and sleeves above the soft supplex legs makes this sumptuous catsuit as easy to wear as it is beautiful. Over the heel legs and back keyhole. Sizes: Youth 10-12, 12-14 - Adult S, M, L

291
Black

293 Blackjack Catsuit - Sleek, smooth supplex 1-piece in solid black with a high neck and back zipper, long sheer mesh sleeves and an under-the-heel fit for a longer leg line. Sizes: Youth 8-10, 10-12, 12-14 - Adult XS, Small, Medium, Large, XL



292



293



293



292

292 Long Sleeve 1-Piece - Long, lean looking black catsuit in supplex with sheer mesh sleeves, a high neck and heart shaped back key-hole. Diamond thatch crystals at the front for sparkle. Sizes: Youth 8-10, 10-12, 12-14 - Adult XS, Small, Medium, Large, XL

294



294

296 Glitter Mesh 1-Piece - Black
supplex catsuit with an empire top
and long sleeves in glitter mesh.
Shaped front neckline; deep V-back
with a trio of parallel straps. (Shown
with 1107 gloves in black).
Sizes: Youth 10-12, 12-14 -
Adult XS, S, M, L

296

296

294 Lace Overlay 1-Piece -

A slim supplex unitard with
elbow length lace sleeves, an
empire front and a jewel neck
with crossed back straps.
Sizes: Youth 8-10, 10-12 12-14
- Adult XS, S, M, L

Set your sights

Above the Barre

S200

S400

S200

S100

S100

S500

S100 Above the Barre Legging - High waist black supplex leggings feature colour block stripes at centre back and outer calves. Flat stitched seams and under the heel styling add soft, flexible comfort.
Sizes: Youth 8-10, 10-12, 12-14 - Adult S, M, L

S200 Above the Barre Jacket - Black supplex jacket with fold over collar, full front zip and striking colour block stripes.
Sizes: Youth 8-10, 10-12, 12-14 - Adult S, M, L

S400 Above the Barre Top - Long sleeved square neck pullover sports colourfull stripes at the shoulders and side hems. Made of soft, breathable supplex to regulate body temperature.
Sizes:
Youth 10-12, 12-4 - Adult S, M, L

S500 Above the Barre Skirt - Sporty black supplex skirt with side stripes, elastic waist and panties.
Sizes: Youth 10-12, 12-14 - Adult S, M, L



S100



S200

S100

S100 Above the Barre Legging - High waist black supplex leggings feature colour block stripes at centre back and outer calves. Flat stitched seams and under the heel styling add soft, flexible comfort.
Sizes: Youth 8-10, 10-12, 12-14 - Adult S, M, L

S200 Above the Barre Jacket - Black supplex jacket with fold over collar, full front zip and striking colour block stripes.
Sizes: Youth 8-10, 10-12, 12-14 - Adult S, M, L



1830 Skittles Headband

S201 - Ice Slide Jacket - Full zip supplex jacket sports aqua blue to ocean blue shaded raglan sleeves and black cross cut trim. Sizes: Youth 10-12, 12-14 - Adult S, M, L

S201



S201

S101

S101

S101 Ice Slide Pants - Black moisture wicking supplex sport pants with icy blue crossed ribbons of shaded lycra that fades from ocean to aqua. Sizes: Youth 10-12, 12-14 - Adult S, M, L



S101

S230 Skittles Ribbon Jacket - Black fleece jacket with full front zipper and an overlapping hourglass design along the sleeves in our bright multi coloured skittles option! Sizes: Youth 8-10, 10-12, 12-14 - Adult S, M, L

S230



S130

S130 Ribbon Pants - Skittles Multi - Black fleece legging pants with an elastic waist and an hourglass design in bright complementary accent colours along each leg for a long, slim look. Sizes: Youth 8-10, 10-12, 12-14 - Adult S, M, L

Ribbonette

S203
Royal/
Pink

S203 Ribbonette Jacket - Royal/Pink or Purple/Ocean - Warm fleece jacket with co-ordinating ribbons of contrasting colour down the back and crystal details where they cross paths. Full front zipper and zippered side pockets. Sizes: Youth 6-8, 8-10, 10-12, 12-14 - Adult Small, Medium, Large

S103 Ribbonette Leggings - Royal/Pink or Purple/Ocean - Warm, cozy and brushed inside for added softness, these thick black leggings are accented with rhinestones where the curves of colour cross. Under-the-heel fit for a longer leg line. Sizes: Youth 4-6, 6-8, 8-10, 10-12, 12-14 - Adult S, M, L

S103
Royal/
Pink

S103
Purple/
Ocean

S103
Royal/
Pink

S203
Purple/
Ocean

S103
Purple/
Ocean

S107
Steel
Grey

S107
Kirsch
Kick

S107
Shadow
Blue

Core Ice

S207
Shadow
Blue

S107 Ice Core Splice Leggings - Steel Grey, Kirsch Kick or Shadow Blue -
Black moisture wicking leggings with cross-split insets in heathered supplex, an under-the-heel fit and a smooth, wide waistband. Sizes: Youth 8-10, 10-12, 12-14 - Adult XS, Small, Medium, Large

1817
Kirsch
Kick

S108
Shadow
Blue

S307
Kirsch
Kick

S307
Steel
Grey

S307
Kirsch
Kick

Ice Core

S307 Ice Core Tank Top - Steel Grey or Kirsch Kick -
Soft supplex tank top with a high neck and strappy back with self-adjusting straps and a built-in shelf bra. Sizes: Youth 10-12, 12-14 - Adult XS, Small, Medium, Large

1817 Headband - Steel Grey, Kirsch Kick or Shadow Blue -
Heathered Sport Supplex Headbands - One size

S107
Kirsch
Kick



S207
Kirsch
Kick



S108
Steel
Grey



S108
Kirsch
Kick

1867 Core Ice
Marled Sport
Masks - Steel
Grey, Kirsch
Kick or
Shadow Blue



1867 Kirsch



1867 Blue

**S207 Core Ice Jacket -
Steel Grey or Kirsch Kick -**
Quick drying supplex jacket with
long palm length sleeves,shaped
hourglass heather front core and
panelled back. Sizes: Youth
8-10, 10-12, 12-14 - Adult Small,
Medium, Large



S207
Steel
Grey

S108
Steel
Grey



S207
Shadow
Blue

S108
Shadow
Blue

**S108 Core Ice Marled
Legging - Steel Grey or
Kirsch Kick -** Slim supplex
leggings are fast drying and
comfortable with flat-stitched
seams, a smooth wide
waistband and leg lengthen-
ing under-the-heel fit. Sizes:
Youth 8-10, 10-12, 12-14 -
Adult XS, Small, Medium,
Large



S207
Kirsch
Kick

S108
Kirsch
Kick

**Ice
Core**



S110
Royal
Frost



S210
Ocean
Mist



S210
Rose
Snow

S110
Rose
Snow



S210
Grape
Ice

304
Grape



S210
Lemon
Ice

S210 Ice Ribbon Jacket - Grape Ice, Ocean Mist, Rose Snow, Royal Frost or Lemon Ice - Soft jackets in substantial fleece feature full front zippers and sleeves with shaded ribbons that blend into icy white at the wrists. Sizes: Youth 6-8, 8-10, 10-12, 12-14 - Adult Small, Medium, Large

304 Triple Ribbon Skirts - Grape, Ocean, Rose & Royal (see page 81)

Ice Ribbons

S110
Ocean
Mist

S110
Rose
Snow

S110
Royal
Frost

S110
Lemon
Ice

S110
Grape
Ice

S110 Ice Ribbon Pants -
Ocean Mist, Rose Snow,
Royal Frost, Lemon Ice or
Grape Ice - Warm black fleece
leggings with our signature
ribbon design motif down the sides,
in stunning ice-fade colours.
Sizes: Youth 6-8, 8-10, 10-12,
12-14 - Adult Small, Medium, Large

S411
Orchid
Shade

S111
Orchid
Shade

S111 Made in the Shade Leggings - Sky Fade, Purple Grade or Orchid Shade - Sleek matte lycra leggings shade from ink at the waist to a contrast colour at the ankle. Wide contrast waistband for a comfortable and flattering fit. Sizes: Youth 8-10, 10-12, 12-14 - Adult XS, Small, Medium, Large

S111
Purple
Grade

S411 Made in the Shade Top - Sky Fade, Purple Grade or Orchid Shade - Jewel neckline top in shaded matte lycra with long supplex sleeves. Sizes: Youth 8-10, 10-12, 12-14 - Adult XS, Small, Medium, Large

Made in the Shade

S411
Orchid
Shade

S111
Orchid
Shade

S411
Sky
Fade

S111
Sky
Fade

S411
Purple
Grade

S111
Purple
Grade

1860



1860 Solid 3-Ply Sport Mask - Black - Contoured triple layer sport mask with nose and chin darts for shaping and soft elastic ear loops with adjusters. Outer layer is anti-microbial supplex with a middle layer and soft inner lining all in stretch fabrics for a comfortable fit. Washable and re-useable; this is not a medical grade mask. Sizes: XS/S, M/L

S412

S412 Daisy Print Top -

Black performance supplex top with raglan sleeves in daisy print and a jewel neckline. Sizes: Youth 8-10, 10-12, 12-14 - Adult Small

S114

S114 Daisy Print Leggings -

Fun daisy print lycra leggings feature a wide, smooth waistband for a perfect fit. Sizes: Youth 6-8, 8-10, 10-12, 12-14 - Adult Small



S114



S113

S113 Crystal Snow Daisy Leggings -

Soft fleece leggings brushed inside for warmth with an under-the-heel fit and a trio of crystal daisies on one thigh. Sizes: Youth 6-8, 8-10, 10-12, 12-14 - Adult Small

S212 Snow Daisy Jacket

- Black fleece jacket with red contrast trim, daisy print lining in the collar, a full front zipper, little crystal daisy on one hip, and a crystal skate and daisy design on the back. Sizes: Youth 6-8, 8-10, 10-12, 12-14 - Adult Small

S212



1860

S212



S114

Snow Daisy

504 Daisy Skirt - Lycra print skirt in our popular daisy pattern with a back underskirt in red, a lycra panty and elastic waist for comfort. Sizes: Youth 6-8, 8-10, 10-12, 12-14 - Adult Small



1106 Daisy Gloves

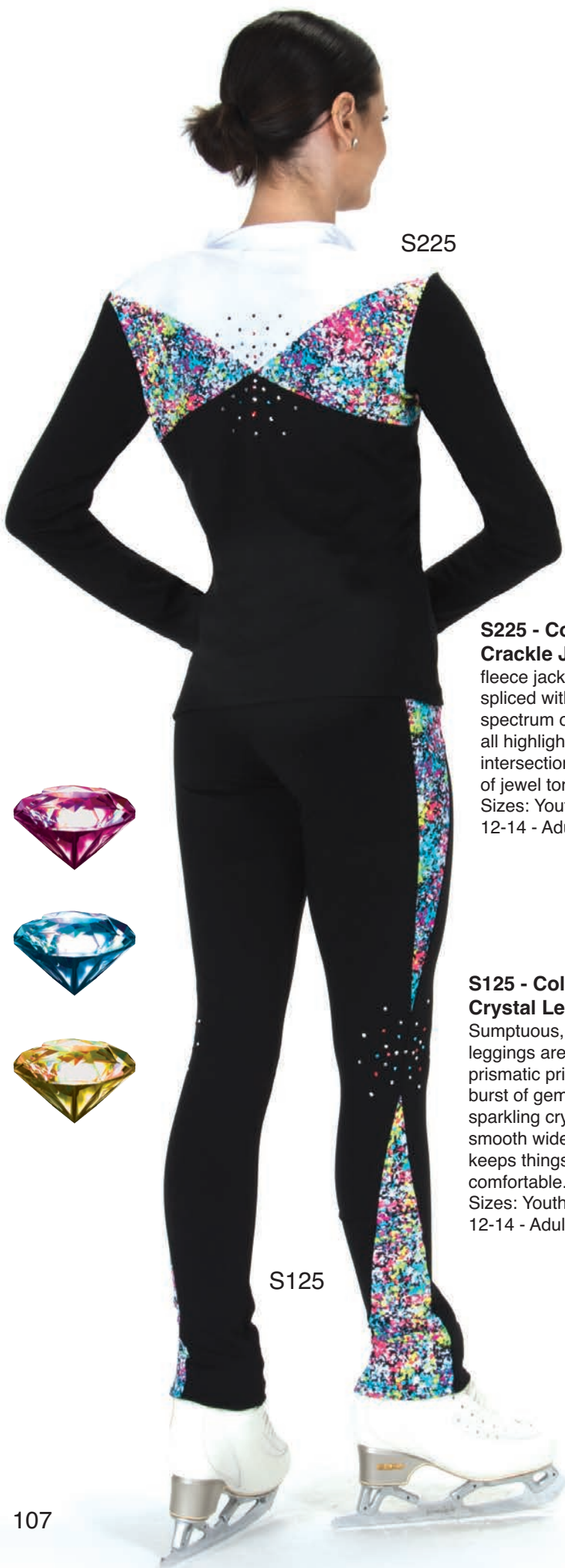
- Red - Fun stretch gloves with crystal daisy design



504



1200D - Daisy Print Hair Scrunchie



S225

S225 - Colour

Crackle Jacket - Black fleece jacket is crisply spliced with white and a spectrum of print colours all highlighted at the back intersection with a radius of jewel toned crystals. Sizes: Youth 8-10, 10-12, 12-14 - Adult S, M, L

S125

S125 - Colour Crackle Crystal Leggings -

Sumptuous, plush fleece leggings are spliced with prismatic print lycra and a burst of gem coloured sparkling crystals. The smooth wide waistband keeps things neat and comfortable.

Sizes: Youth 8-10, 10-12, 12-14 - Adult S, M, L



C

O

L

O

U

R

C

R

A

C

K

L

E



S225

S126

**S425 - Colour
Crackle Bow Top -**
Pullover black
supplex top with print
raglan sleeves and a
fun back bow. Sizes:
Youth 8-10, 10-12,
12-14 - Adult S, M, L

S425

S425

COLOUR

CRACKLE

**S126 - Colour Crackle
Print Legging -** Print
lycra legging with elastic
waist can be pulled down
under the heel or left at
ankle height. Sizes: Youth
8-10, 10-12, 12-14 - Adult
S, M, L

S126

S237

S237 Silverstone Jacket - Black power fleece jacket is smooth and sleek on the outside, but brushed for warmth inside. Knuckle length sleeves with thumb holes, full front zipper, stone print lining inside the collar and banded accents of ice white and steel. Sizes: Youth 8-10, 10-12, 12-14 - Adult Small, Medium, Large, XL

410 Velvet Puffer Vest -Black velvet mini puffer vest with a stand collar and front zipper perfect for layering. (Shown with S438 Top & S138 Legs). Sizes: Youth 10-12, 12-14 - Adult XS, S, M, L

S239
Black/
Ice

410

S137

S438 Silverswoop Top - Sleek jewel-neck top with long black supplex sleeves. Sizes: Youth 8-10, 10-12, 12-14 - Adult XS, Small, Medium, Large, XL

S138 Silverswoop Leggings - Slim black supplex leggings with an accent swoop of print angled from the knee to ankle, an under-the-heel fit and wide black waistband. Sizes: Youth 8-10, 10-12, 12-14 - Adult XS, Small, Medium, Large, XL

S138

S137

S438

S239
Black/
Ice

S137 Silverstone Leggings - Black power fleece leggings with icy stripes, an under-the-heel legging cut and a wide waistband bordered in silverstone print. Sizes: Youth 8-10, 10-12, 12-14 - Adult XS, Small, Medium, Large, XL

S137

S137

S239 Ice Stage Jacket - Black/Ice - Warm power fleece jacket with a slim hourglass shape, long palm length sleeves with thumb holes and a crystal layback silhouette in jet stones at the back. Sizes: Youth 8-10, 10-12, 12-14 - Adult Small, Medium, Large

1838 Silverswoop Headband

S137

S137 Silverstone Leggings - Black power fleece leggings with icy stripes, an under-the-heel legging cut and a wide waistband bordered in silverstone print. Sizes: Youth 8-10, 10-12, 12-14 - Adult XS, Small, Medium, Large, XL

S438 Silverswoop Top - Sleek jewel-neck top with long black supplex sleeves. Sizes: Youth 8-10, 10-12, 12-14 - Adult XS, Small, Medium, Large, XL

S237 Silverstone Jacket - Black power fleece jacket is smooth and sleek on the outside, but brushed for warmth inside. Knuckle length sleeves with thumb holes, full front zipper, stone print lining inside the collar and banded accents of ice white and steel. Sizes: Youth 8-10, 10-12, 12-14 - Adult Small, Medium, Large, XL

S237

410 Velvet Puffer Vest -Black velvet mini puffer vest with a stand collar and front zipper perfect for layering. (Shown with S438 Top & S138 Legs). Sizes: Youth 10-12, 12-14 - Adult XS, S, M, L

410

S438

S138

S138 Silverswoop Leggings - Slim black supplex leggings with an under-the-heel fit, print inserts and a wide black waistband. Sizes: Youth 8-10, 10-12, 12-14 - Adult XS, Small, Medium, Large, XL

S138

S137

S138

SnowScape

S241

S241 - SnowScape Jacket -

Warm fleece, full zip jacket features cozy thumbholes, raglan sleeves and a print collar lining as well as sparkling crystal snowflakes on both the front and back. Sizes: Youth 6-8, 8-10, 10-12, 12-14 - Adult S, M, L

S141

S141 - Crystal SnowScape

Leggings - Sleek black fleece leggings designed with an ultra comfortable high waist in a striking print and set off by an eye-catching art-nouveau crystal snowflake on one lower leg. Sizes: Youth 6-8, 8-10, 10-12, 12-14 - Adult S, M, L

S141

S241



S142

SnowScape

S142 - Stripe SnowScape Legging

Thermal fleece legging cut in an under-the-heel length sports royal blue stripes and a flattering shaped back yoke of printed lycra. Elastic waist.

Sizes: Youth 6-8, 8-10, 10-12, 12-14 - Adult S, M, L

S241 - SnowScape Jacket -

Warm fleece, full zip jacket features cozy thumbholes, raglan sleeves and a print collar lining as well as sparkling crystal snowflakes on both the front and back. Sizes: Youth 6-8, 8-10, 10-12, 12-14 - Adult S, M, L

S143 - SnowScape Inset Leggings

Black supplex leggings feature a high waist, flat seam construction, sleek under the heel length and icy hues print inserts. Sizes:

Youth 8-10, 10-12, 12-14 - Adult S, M, L



S142

S143

S143





S161



1861

1861 Pink Paradigm Sport Mask - Triple layer sport mask with soft elastic ear loops and adjusters. Sizes: S/M or M/L

S261 Pink Paradigm Jacket - Plush on the inside, smooth on the outside: this jacket is made of warm stretch fleece. Thumbholes, premium YKK zipper and a soft protective chin flap gives the jacket extra performance points. Sizes: Youth 6-8, 8-10, 10-12, 12-14 - Adult S, M, L

S261



S161



S162

S261



S162



S162

113



1228P

1228P - Pink Paradigm Print Lycra Bootcovers



S165



S167



S165

S165 Honey Bow Tie Back

Leggings - Black supplex leggings with flat stitched seams and a wide waistband in dainty print bows that ties at the small of the back. Sizes: Youth 8-10, 10-12, 12-14 - Adult S, M, L

1865 Honey Bow Face Mask - 3-Layer supplex mask with crystal bow detail, and soft adjustable ear loops. Sizes: XS/S or M/L

1865



S465

S465 Honey Bow Top - Black supplex top with honey bow print sleeves and a keyhole back with tie detail at the neck. Sizes: Youth 8-10, 10-12, 12-14 - Adult S, M, L

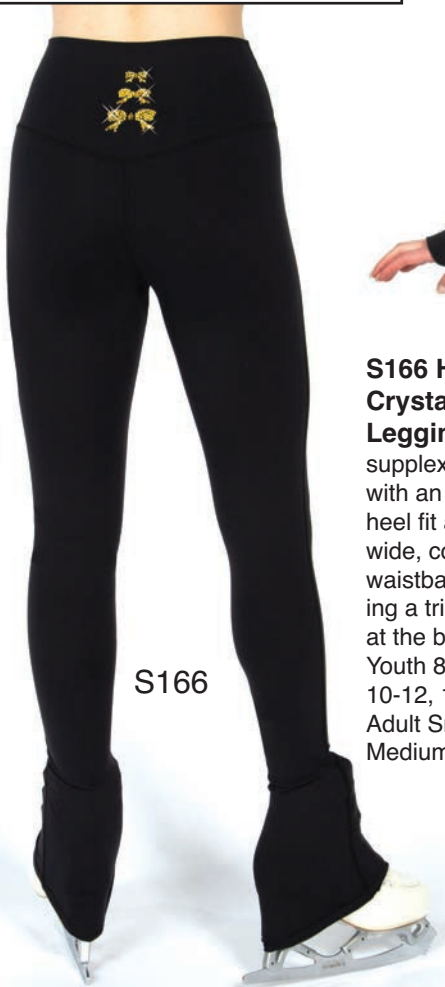
S266 Honey Crystal Bow Jacket

- Black supplex jacket with, thumb holes, flattering contrast piping and a trio of crystal bows at the back. Sizes: Youth 8-10, 10-12, 12-14 - Adult S, M, L

S266



S266



S166

S166 Honey Crystal Bow Leggings - Black supplex leggings with an under-the-heel fit and a wide, contoured waistband featuring a trio of bows at the back. Sizes: Youth 8-10, 10-12, 12-14 - Adult Small, Medium, Large

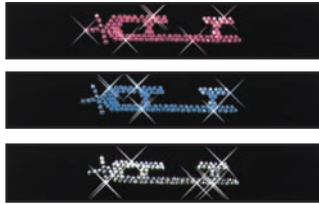
S167 Honey Bow Print Leggings - Whimsical bow print lycra leggings with a wide contoured waistband for a sleek fit. Sizes: Youth 8-10, 10-12, 12-14 - Adult Small, Medium, Large

S167

S256
Pink



S256 Sit Spin Bling Jacket - Pink or Blue - Cameo style crystal design highlighting a sit spin silhouette and shading from a clear crystal halo to pretty coloured crystals at ice level. Jacket is thick fleece brushed inside for softness. Sizes: Youth 6-8, 8-10, 10-12, 12-14 - Adult Small, Medium, Large



S155 Pink

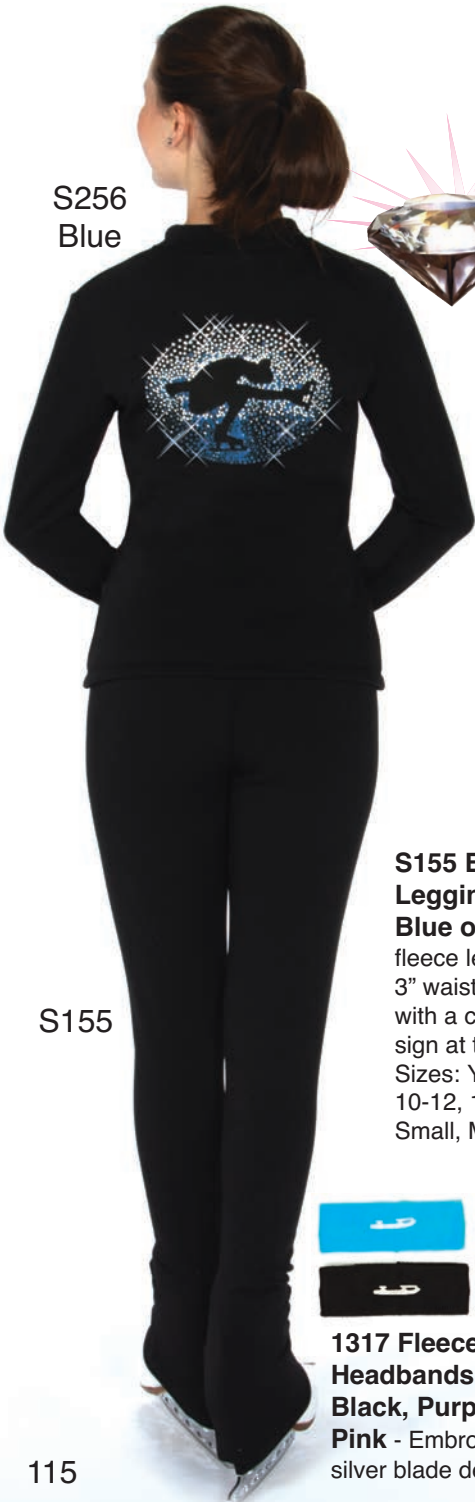
S155 Blue

S155 Clear

S155
Clear



S256
Blue



S155

S155 Blade Waist Leggings - Clear, Blue or Pink - Black fleece leggings with a 3" waistband accented with a crystal blade design at the back waist. Sizes: Youth 6-8, 8-10, 10-12, 12-14 - Adult Small, Medium, Large



1317 Fleece Blade Headbands - Sky, Black, Purple, Pink - Embroidered silver blade design

S150 Blade Bling Thigh Pant - Black fleece leggings with a crystal blade design on the right thigh. Sizes: Youth 6-8, 8-10, 10-12, 12-14 - Adult Small, Medium, Large

S151 Blade Bling Ankle Pant - Black fleece leggings with an under-the-heel fit and a sparkling crystal blade design at the ankle. Sizes: Youth 6-8, 8-10, 10-12, 12-14 - Adult Small, Medium, Large



S250



S250 Blade Bling Jacket - Warm black fleece jacket with full front zipper and a sparkling crystal blade across the back. Sizes: Youth 8-10, 10-12, 12-14 - Adult Small, Medium, Large

S150



S151



S252



**1108
Snowflake
Gloves -**

White,
Black



S252 Snowflake Bling Jacket - Full zipper jacket in warm fleece with sparkling crystal snowflake design across the back.
Sizes: Youth 6-8, 8-10, 10-12, 12-14 - Adult S, M, L



S252



**1318 Crystal Skate
Headbands - Black,
White or Pink -**

Shaped velvet
headbands lined with
velveteen fleece.



**S152 Snowflake
Bling Legs** - Cozy
black fleece leggings
with sparkling crystal
snowflakes on one
leg. Smooth fit
waistband and elastic
at the heels that keeps
the legging securely
under the heel. Sizes:
Youth 6-8, 8-10,
10-12, 12-14 - Adult
Small, Medium, Large



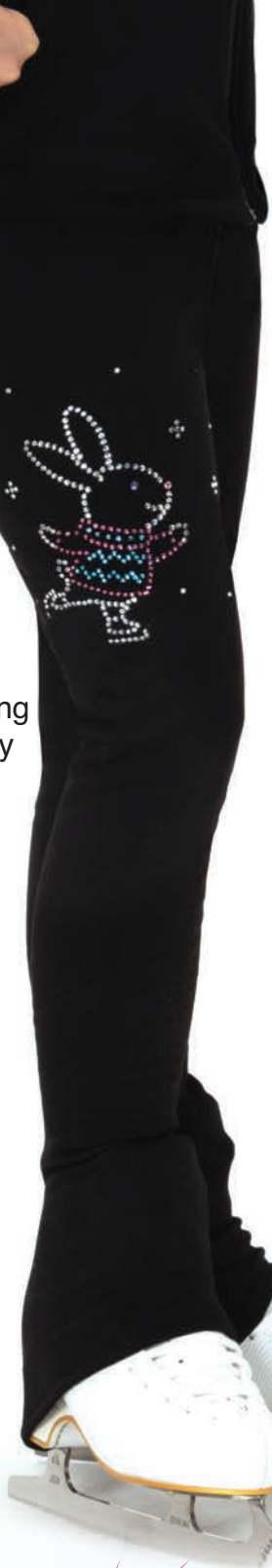
S152



**1226S Snowflake
Bootcovers -
Black or White**



S170
Skating
Bunny



S270
Skating
Penguin



S170
Skating
Penguin



S270
Skating
Bunny

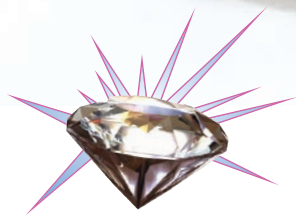


S170 - Skating Critter Crystal Legging - Skating Bunny or Skating Penguin - Soft, warm black fleece legging in an over the heel cut with our darling skating critters in pretty crystals on

one thigh. Elastic waist and smooth flat stitched seams for comfort. Sizes: Youth 4-6, 6-8, 8-10, 10-12, 12-14 - Adult S

S270 - Skating Critter Crystal Jacket - Skating Penguin or Skating Bunny -

Black fleece jacket with full front zipper and adorable skating animals in sparkling crystals gliding across the back. Sizes: Youth 4-6, 6-8, 8-10, 10-12, 12-14 - Adult S



S272 Crossed Blade Jacket - Gold Crown or Pink Heart - Black fleece jacket with raglan style sleeves, thumb holes and a full front zipper. Sparkling crystal design on the back. Sizes: Youth 8-10, 10-12, 12-14 - Adult S, M, L



S272
Gold
Crown



S272
Pink
Heart

S172
Pink
Heart

S172
Gold
Crown

S172 Crossed Blade Leggings - Gold Crown or Pink Heart - Black fleece leggings with an under-the-heel cut and a high waist for comfort. Sizes: Youth 8-10, 10-12, 12-14 - Adult S, M, L



402

S239
Black/
Ice



410 Velvet Puffer Vest - Black velvet outer quilted with dainty puffer seams and lined with nylon on the inside for easy on/off. Warm and sophisticated enough for test and competitive warm-ups. Sizes: Youth 10-12, 12-14 - Adult S, M, L

S402 Black Mesh Top - Slim supplex top with long mesh sleeves and scoop neck. Sizes: Youth 10-12, 12-14 - Adult S, M, L



410

402 Black Wrap Top - An easy wearing piece that is soft and cozy but light and breathable, and that layers perfectly with everything from tank tops and bodysuits to leggings and dresses. Sizes: Youth S/M, M/L - Adult S/M, M/L

S239 Ice Stage Jacket - Black/Ice - Warm power fleece jacket with a slim hourglass shape, long palm length sleeves with thumb holes and a crystal layback silhouette in jet stones at the back. Sizes: Youth 8-10, 10-12, 12-14 - Adult S, M, L



S402

403 Sport Fleece Jacket - New slim design stretch fleece jacket for cozy warmth. Sizes: Youth 6-8, 8-10, 10-12, 12-14 - Adult S, M, L

409 Supplex Jacket - Sporty black jacket in technical moisture wicking supplex. Sizes: Youth 8-10, 10-12, 12-14 - Adult XS, S, M, L

404 White Marshmallow Jacket - Super soft & cozy, this fully zippered jacket is smooth on the inside and a lovely swirled fur on the outside. Sizes: Youth 6-8, 8-10, 10-12, 12-14 - Adult S

406 Crystal Fleece Jacket - Black full zipper jacket with front shaping, on seam pockets and lengthened sleeves with thumb holes. A scattering of crystals adds sparkle. Sizes: Youth 8-10, 10-12, 12-14 - Adult S, M, L



403



409



404



406

AUSTRALIA

DENMARK

ITALY

POLAND

NORWAY

BELGIUM

UNITED STATES



S260
FIN

FINLAND



S260
CAN

CANADA



S260
UK

GERMANY



UNITED
KINGDOM



S260
USA



S260
JPN



S260
SWE



S260
SWI

SWITZERLAND



JAPAN



SWEDEN



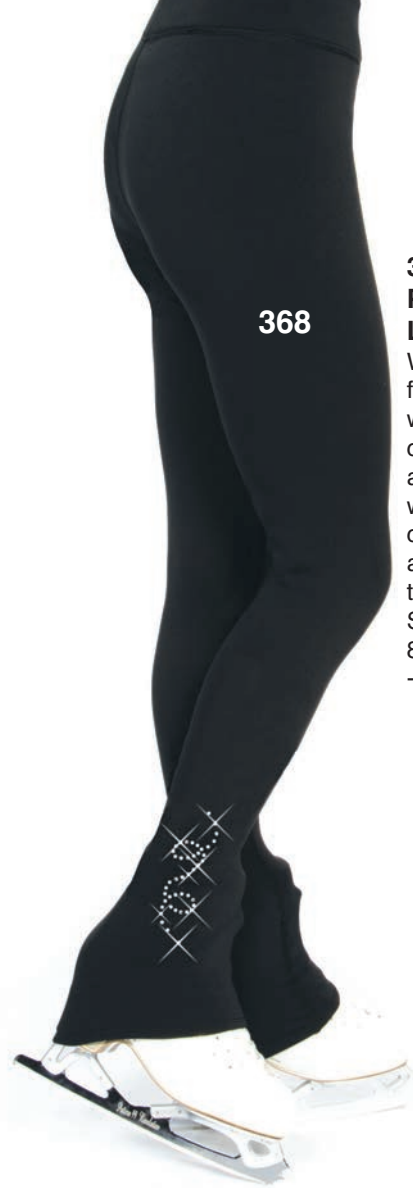
S260
FRA

FRANCE



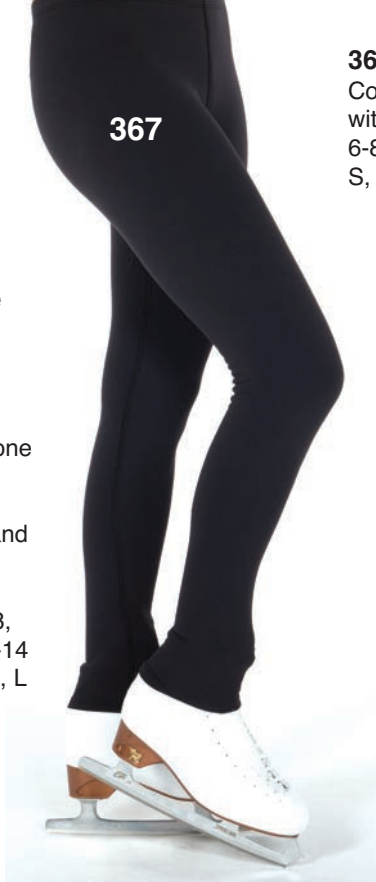
S260 As the World Spins Jackets - Jerry's Skating World brings the world to figure skaters in every country. Flaunt your flag in our power fleece jacket with sparkling crystals outlining a sit spin silhouette against flags of all countries at the back. (Shown here - an assortment of national flags; others available on request). Personalize the front with a skate logo, maple leaf, fleur-de-lis, blade logo or up to 2 letters. Please specify country and front logo/initials. Sizes: Youth 8-10, 10-12, 12-14 - Adult XS, Small, Medium, Large, XL

NEW ZEALAND



368

368 Crystal Power Fleece Leggings -
Warm power fleece leggings with a looping crystal motif at one ankle. Wide waistband for a comfortable fit and a longer under-the-heel length. Sizes: Youth 6-8, 8-10, 10-12, 12-14 - Adult XS, S, M, L



367

365 Fleece Stirrup Legs -
Cozy legging style stirrup pants with clip stirrups. Sizes: Youth 6-8, 8-10, 10-12, 12-14 - Adult S, M, L, XL



365



S102

S102 Fleece Heel Pant -
Under the heel legging style fleece pants. Sizes: Youth 8-10, 10-12, 12-14 - Adult S, M, L



386

367 Fleece Leggings -
Footless leggings in cozy power fleece with an elastic waist that stays put. Sizes: Youth 6-8, 8-10, 10-12, 12-14 - Adult S, M, L, XL



320

386 High Waist Supplex Leggings -
Black supplex performance leggings are moisture wicking, heel length and high waisted for a sleek fit. Sizes: 8-10, 10-12, 12-14 - Adult XS, S, M, L, XL

320 Warm-up Pants -
Nylon outer pants with fleece lining and full side zippers. Sizes: Youth S, M, L - Adult S, M, L



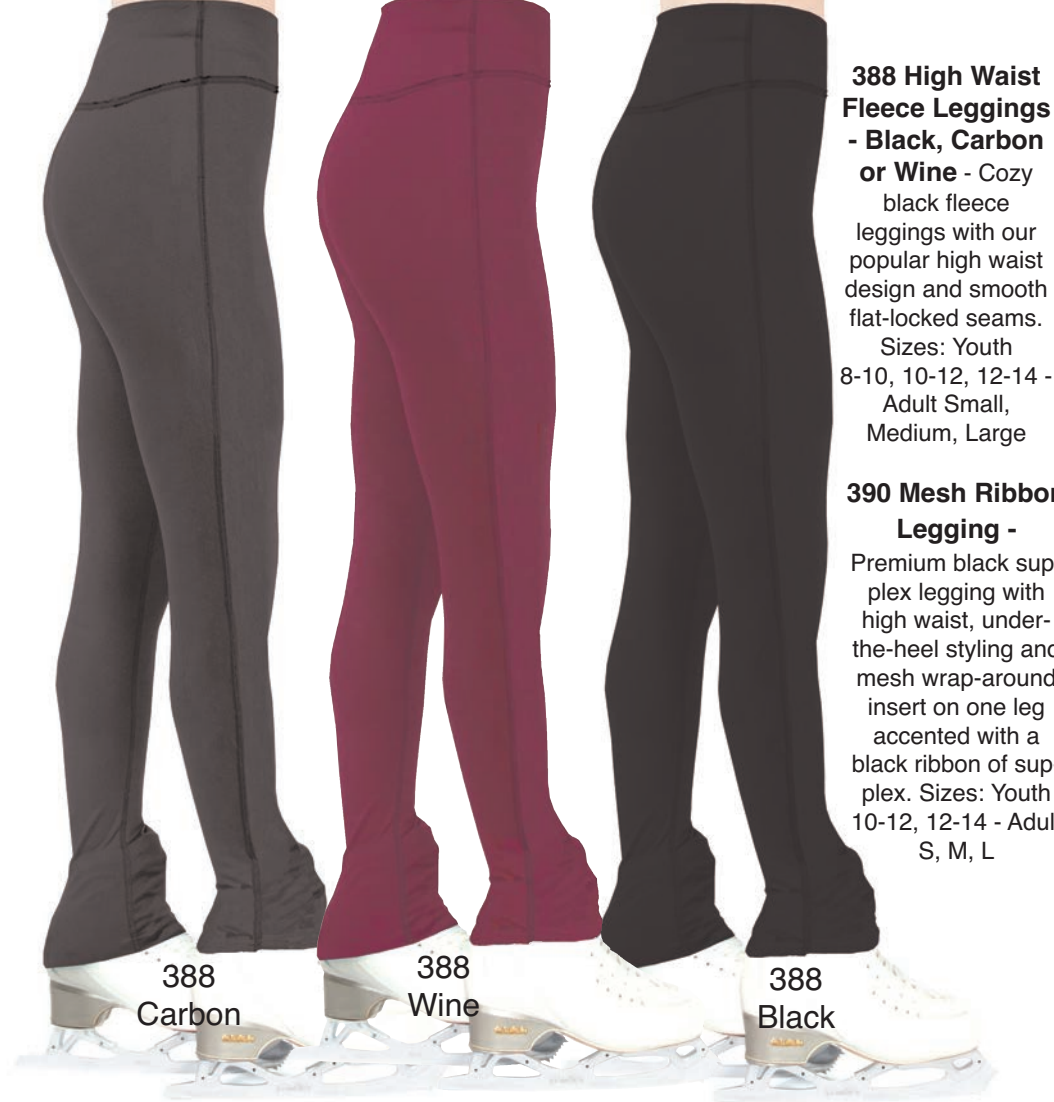
319

319 Lycra Stirrup Legs - Black lycra leggings with an elastic waist and stirrups with clips. Sizes: Youth 6-8, 8-10, 10-12, 12-14 - Adult S, M, L, XL



383

383 Supplex Leggings -
Black moisture wicking supplex leggings with a wide comfort waistband and under-the-heel length. Sizes: Youth 8-10, 10-12, 12-14 - Adult XS, S, M, L, XL



388 High Waist Fleece Leggings - Black, Carbon or Wine - Cozy black fleece leggings with our popular high waist design and smooth flat-locked seams. Sizes: Youth 8-10, 10-12, 12-14 - Adult Small, Medium, Large

390 Mesh Ribbon Legging - Premium black supplex legging with high waist, under-the-heel styling and mesh wrap-around insert on one leg accented with a black ribbon of supplex. Sizes: Youth 10-12, 12-14 - Adult S, M, L



390

NEW

390

395 - Mesh Dot Legging - High waist supplex legging with dot clip mesh insert. Sizes: Youth 10-12, 12-14 - Adult S, M, L



369
Black/
Iris
Blue

369
Solid-
Black

369
Black/
Blush
Pink

393 Crystal Mesh Legging - Black supplex legging with mesh cut outs and crystal detailing on one leg. Sizes: Youth 10-12, 12-14 - Adult S, M, L

369 Tie Back Leggings - Solid Black, Black/Blush Pink, Black/Iris Blue - Smooth moisture-wicking black supplex leggings with a wide, high waist front and functional tie-back. Contrast colours have piping details. Sizes: Youth 8-10, 10-12, 12-14 - Adult S, M, L



393

NEW

395

122

821

803

821

805

825

821 Mens Exploded Top -

Bold white and gold foil shards explode across the front and back of this long sleeved supplex top. Gold piping cuts crisply across the chest and back shoulder seams adding definition. Shown here with style 803 Mens Slim Skating Pant. Sizes: Youth S, M, L - Adult S, M, L

825 Mens Due West Shirt -

Black supplex shirt with cuffed long sleeves and shoulders and front V-placket in dark wine lycra with hammered black/silver geometrical patterning. Split shirt neck and shirt cuffs for a well appointed presentation. Sizes: Youth S, M, L - Adult S, M, L

824

805

824

825

805

824 Mens Power Point Shirt - Long sleeved matte supplex shirt with collar and spliced accents of red and gold cut across the shoulders and sleeves. Sizes: Youth S, M, L - Adult S, M, L

805 Mens Flat Front Skating Pants -

Black heavy weight matte polyester skating pants in a flat front style with belt loops and a zip fly. Unhemmed; elastic straps with Velcro & hooks are provided but not sewn in. Waist Sizes: 22", 24", 26", 28", 30", 32", 34", 36"

826

826 Mens Boxed in Blue Top -

Royal matte shirt with split collar, and horizontal stripe in black with a subtle silver shimmer velvet across the shoulders and down the sleeves. Sizes: Youth S, M, L - Adult S, M, L

828

828 Mens Paisley Brocade Vest -

Black vest with satin back, back tab detail and glitter front. Sizes: Youth M, L - Adult S, M, L

805

805 Mens Flat Front Skating Pants -

Black heavy weight matte polyester skating pants in a flat front style with belt loops and a zip fly. Unhemmed; elastic straps with Velcro & hooks are provided but not sewn in. Waist Sizes: 22", 24", 26", 28", 30", 32", 34", 36"

829

829 Mens Deep Claret Vest -

Rich swirls of dark red and silver dress up the front of this wine coloured vest. Comfortable stretch satin back keeps the look sleek and polished. Sizes: Youth S, M, L - Adult S, M, L

803

826

803

803 Mens Slim Skating Pants -

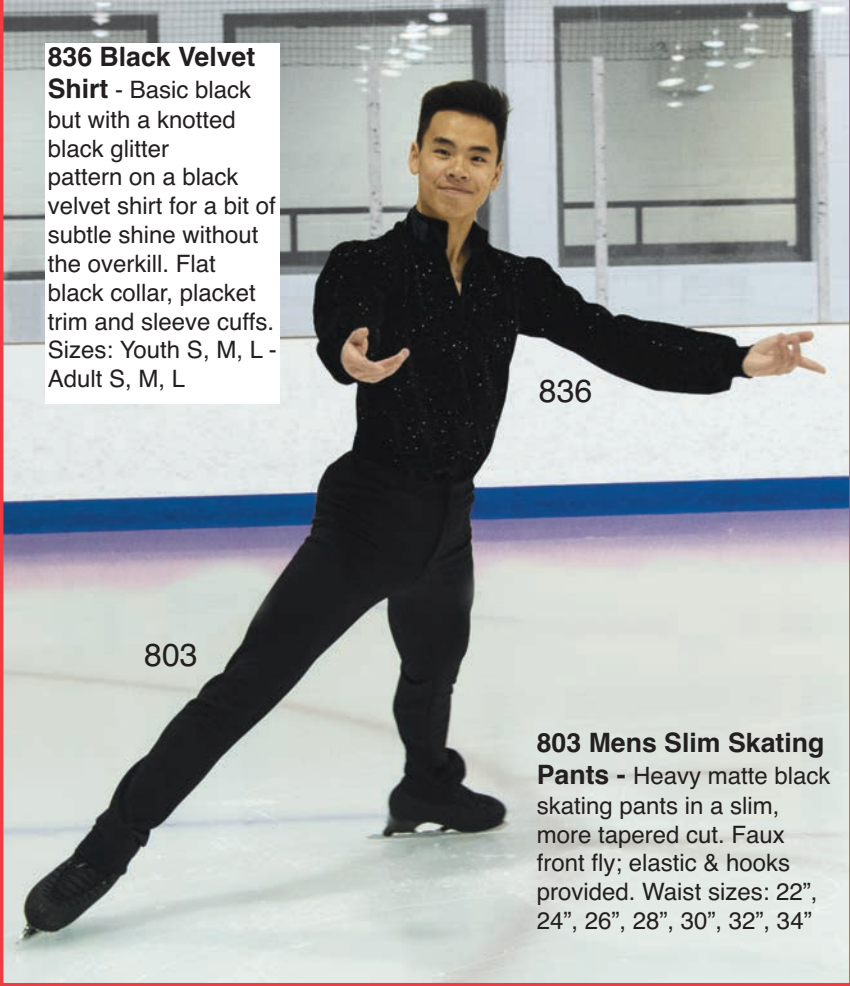
Heavy matte black skating pants in a slim, more tapered cut. Faux front fly; elastic & hooks provided. Waist sizes: 22", 24", 26", 28", 30", 32", 34"

832

832 Mens Red Carpet Vest -

Traditional vest styling that always looks neat and tailored. Red, black and gold patterned glitter velvet front with plain red satin back. Change up the look by experimenting with different shirt and tie combinations. Sizes: Youth S, M, L - Adult S, M, L

836 Black Velvet Shirt - Basic black but with a knotted black glitter pattern on a black velvet shirt for a bit of subtle shine without the overkill. Flat black collar, placket trim and sleeve cuffs. Sizes: Youth S, M, L - Adult S, M, L



836

803

803 Mens Slim Skating Pants - Heavy matte black skating pants in a slim, more tapered cut. Faux front fly; elastic & hooks provided. Waist sizes: 22", 24", 26", 28", 30", 32", 34"

839 Mens Black On Black Shirt - Perfectly understated black matte supplex shirt has subtle black crystals fanning out across its front which catch the light with every move. Spread collar. Sizes: Youth M, L - Adult S, M, L



839

840 Mens Jacket - Black sport jacket with front zipper, white and blue colour accents, contrast stitching and a handy zippered chest pocket. Sizes: Youth S, M, L - Adult S, M, L



840

805

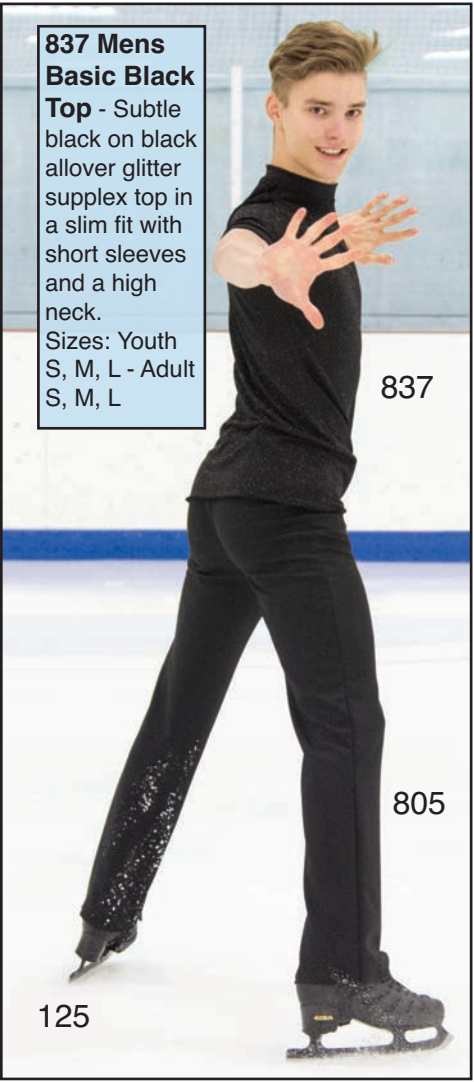
838 Ember Shirt - Striking faded lycra shirts with stand collar and coordinating placket trim. Mesh sleeves with contrasting cuffs update this classic style. Sizes: Youth S, M, L - Adult S, M, L



838

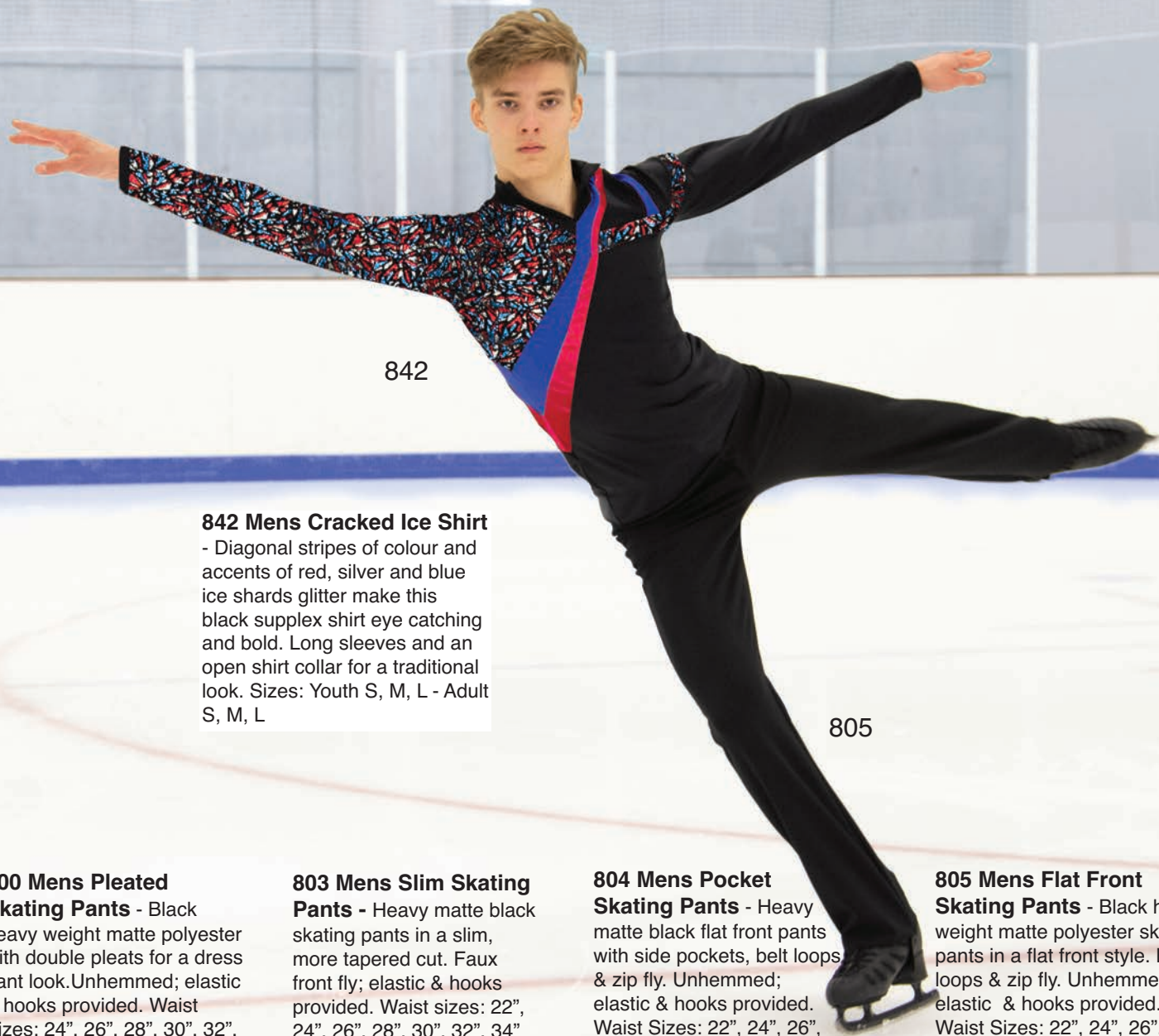
803

837 Mens Basic Black Top - Subtle black on black allover glitter supplex top in a slim fit with short sleeves and a high neck. Sizes: Youth S, M, L - Adult S, M, L



837

805



842

842 Mens Cracked Ice Shirt

- Diagonal stripes of colour and accents of red, silver and blue ice shards glitter make this black supplex shirt eye catching and bold. Long sleeves and an open shirt collar for a traditional look. Sizes: Youth S, M, L - Adult S, M, L

805

800 Mens Pleated Skating Pants

- Black heavy weight matte polyester with double pleats for a dress pant look. Unhemmed; elastic & hooks provided. Waist Sizes: 24", 26", 28", 30", 32", 34"

803 Mens Slim Skating Pants

- Heavy matte black skating pants in a slim, more tapered cut. Faux front fly; elastic & hooks provided. Waist sizes: 22", 24", 26", 28", 30", 32", 34"

804 Mens Pocket Skating Pants

- Heavy matte black flat front pants with side pockets, belt loops & zip fly. Unhemmed; elastic & hooks provided. Waist Sizes: 22", 24", 26", 28", 30", 32", 34"

805 Mens Flat Front Skating Pants

- Black heavy weight matte polyester skating pants in a flat front style. Belt loops & zip fly. Unhemmed; elastic & hooks provided. Waist Sizes: 22", 24", 26", 28", 30", 32", 34", 36"

800

803

804

805



Barrie Royal Blades Adult I & Adult II Teams



Team Mariposa Juvenile



Team Mariposa Pre-Novice

Jerry's Synchro & Team Orders

Jerry's team orders are available in anything from stock styles, modified stock styles, custom designs or original designs based on your own drawings. We also offer custom sizes upon request for team orders, including special sizes for stock dresses even if they are not listed in the catalogue. Boys/mens apparel can be made to co-ordinate with any team order. Hair accessories, arm bands, boot covers and other accent items can also be ordered to match team outfits, but are not included unless specifically requested at the time of the initial order.

Please note that any & all custom designs, colours and/or sizes are non-returnable and non-refundable and as such are sales final. Also, teams that are ordered by measurements and/or customized sizes are not guaranteed for fit and are sales final. For custom/modified outfits, samples may be produced if time allows, but please note that if changes are to be made, alteration charges will apply. We will try our best to alter a sample so that it can be used as part of a team order, but extensive changes, colour alterations and drastic modifications occasionally cannot be done and it is actually more cost effective to simply produce a completely new outfit.

Stock items shown in this catalogue are available in any quantity (depending upon fabric availability at the time of order); however, modified stock items and custom teams are available for groups of 10 or more outfits, otherwise pattern charges and a below minimum production fee may apply. In addition, some larger/plus sizes may be priced higher depending upon how the patterns will work with our various fabric widths.

Additions to teams placed after the initial order cannot be guaranteed. While we do make every effort to accomodate additions, we cannot guarantee fabric availability or exact dye lots after the initial order has been put into production. Alternatively, we also cannot necessarily cancel an outfit for custom teams after the initial order has been placed if the team has already been cut & put into production. To keep everyone happy, please double check to make sure that items have been ordered for all members of the team including back-up/alternate members and male members at the time of the initial order. Additions to teams can take much longer to produce as scheduling can be very tight at times and priority will go to producing subsequent teams and our own stock items. In order to make sure we meet delivery times, we must rely on our valued customers to make sure they have ordered the correct numbers and sizes of items required.

Please allow extra time for all team orders & call us for more information. We will be happy to help!



Onyx Blades Team
Border Blades Figure Skating Club



Emerald Blades Team
Border Blades Figure Skating Club

Jerry's Test/Competition Gloves -

Sheer Mesh gloves are mesh on the back of the hand with palms in solid micro jersey for a natural look while keeping hands covered. Sizes: S, M, L

**1120 Mesh Gloves -
Beige or Black**

**1121 Glitter Mesh
Gloves - Beige or Black**



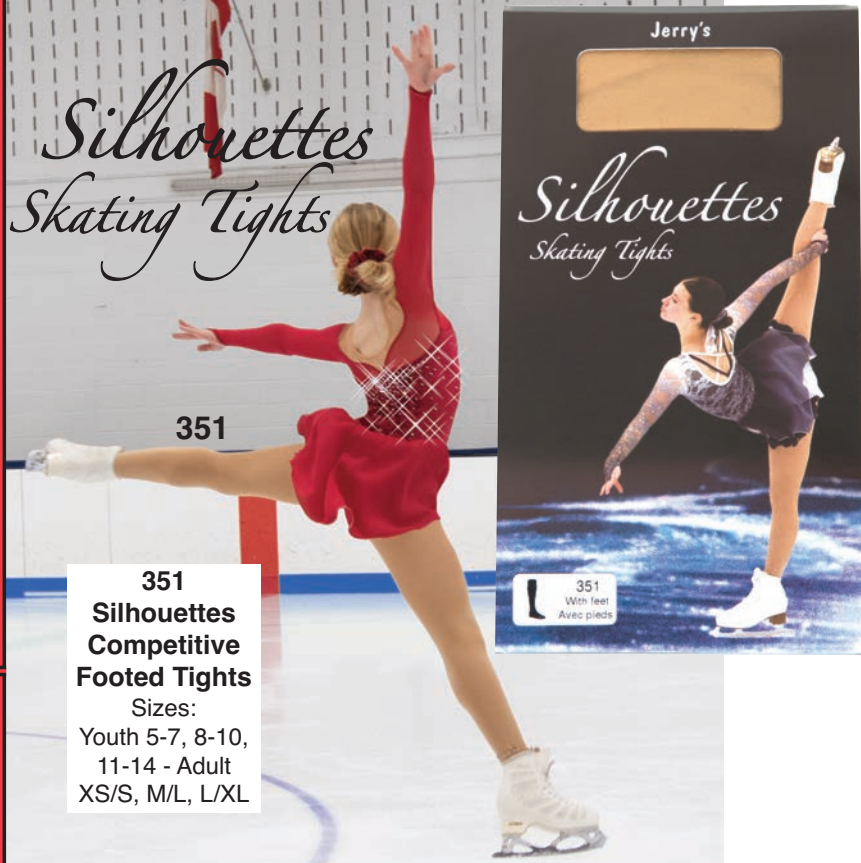
1121
Beige Glitter



1120
Black



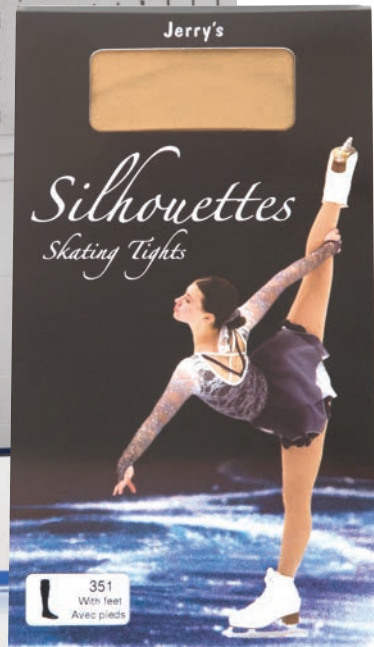
Silhouettes Skating Tights



351

**351
Silhouettes
Competitive
Footed Tights**

Sizes:
Youth 5-7, 8-10,
11-14 - Adult
XS/S, M/L, L/XL



351
With feet
Avec pieds

372

Premium satin finish opaque ribbed tights of nylon & combed cotton in suntan colour. Machine washable.

**372
Heavy Over
the Boot
Tights**

**372 Over the Boot
Tights - Sizes:**
Youth 4-6, 6-8, 8-10,
10-12, 12-14



351



351 Features -

- No show whisper weave wide comfort waistband
- Sleek flex-fit design with superior stretch
- Invisible reinforced stitching instead of a gusset for ease of movement without ugly seams showing
- Phantom toe seams for comfort
- Extreme performance durability

351 Silhouettes Competition Skating Tights - With Feet

Superior quality footed tights in a premium test/competition weight designed to deliver maximum comfort and performance.

Colour: Natural

Sizes: Youth 5-7, 8-10, 11-14 - Adult XS/S, M/L, L/XL

Jerry's Skating Tights

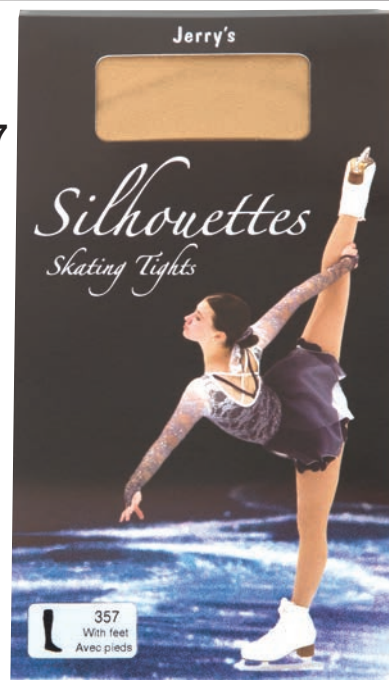
**357
Silhouettes
Competitive
Knee Highs**
One Size



357 Silhouettes Knee Highs -

Competition weight knee highs in natural feature integrated comfort banding, phantom toe seams and a superior flex fit that conforms to your foot. These performance knee highs are perfect for wearing with leggings or a 1-piece and maintain the proper fit and feel for control with comfort in competitive skates. Exclusive to Jerry's.
One Size

357



357
With feet
Avec pieds



855 Jerry's Knee Pads - Black or Beige - Contoured knee pads with Velcro closure at the back so they can be quick to put on & take off. Sizes: Youth One Size - Adult One Size



1222 Jerry's Ankle Pads - Circular foam pads with cutouts to effectively relieve pain at pressure points. These significantly improve comfort levels even where blisters have already developed. Simply position the opening over the affected area before lacing skates & ta-da! - instant relief! Pack of 2.

856 Elbow Pads - Beige lycra elbow pads feature gel cushioning to protect the sensitive elbow area from bruising. Easy to remove and put back on. Sold as pairs. Sizes: Youth - Adult



905 Jerry's Jel Cushion Dots - 2 Per Pack - A pair of round gel cushions that can be placed anywhere in the skate to relieve pain & pressure. Hypoallergenic, washable & reusable.

854 Padded Touch Hand/Palm Guards - Beige Only - Protective padding cushions against bumps & bruising. The thumb hole keeps the padding in place but the single opening across the knuckles means these are versatile enough to be worn alone or even under gloves & mitts. These are sold as pairs.

Jerry's Jel

Jel tubes fit over the ankle/shin area to reduce friction, pressure and rubbing inside skates. Hypo-allergenic, washable & reusable.



900Y - Jerry's YOUTH SIZE Jel Tubes - The same great gel cushioning as our popular 900 Jel Tubes, but in a shorter length of approximately 3 3/4" (10cm). Circumference is the same as the regular size 900. Protects and cushions against friction, pressure and rubbing. Hypoallergenic, washable and re-useable. 2 per pack.





**850
Black**

850 Jerry's Protective Shorts - Black or Beige -

Padding at the tailbone and both hips cushions hard falls and helps optimize training time by preventing injuries. Elastic waist for a comfortable fit. Sizes: Youth S/M, M/L - Adult S/M, M/L, L/XL

Jerry's Padded Skatewear

852 Jerry's Protective Leggings - Black Only -

These are the leggings that do it all by providing generous padding at the tailbone, shaped padding at the hips and contoured knee padding, all in one. Slim legging style fit in black lycra with sewn-in padding and elastic waist to keep everything securely in place. Sizes: Youth S, M, L - Adult S, M, L

Made in Canada



**852
Black**



**850
Beige**

1400 Icy Clear Straps

- Clear, adjustable bra straps for concealing undergarments. Hand wash with mild soap, air dry. One pair of straps per package.



1400



1400

851 Cushy Tushy Protectors - Designed so they can be discreetly worn for tests and competitions, these beige lycra bikinis can be worn over tights to cushion tailbones from the occasional bump of a fall while still maintaining a slim silhouette. Gel cushioning at the tailbone is slimmer than our protective shorts. Everyone prone to tailbone bruising will have the psychological advantage of knowing they are protected without the obvious bulk of everyday protective wear. Sizes: Youth S, M, L - Adult S, M, L



**853
Beige**



**853
Beige**

853 Jerry's Foam Pad - Beige or NEW! Black - Put some extra padding anywhere you need it!



851



1620

1620

1620 Posture Perfect Device -

A helpful aid in improving posture by keeping shoulders back and better aligned. Wide Velcro closure allows for an adjustable fit; non-roll front straps stay flat. Black only.
 Sizes: Youth S/M, M/L - Adult S/M, M/L

Jerry's Off Ice Training

1500 Skipping Ropes - Boxed display stand comes with an assortment of coloured skipping ropes each in individual cases. Twelve ropes per stand. One of the best ways to build stamina and endurance.



1500

Jerry's

Style 1500

Speed Ropes

• Build strength, stamina and endurance
 • Perfect for off ice cardio training and warm-up exercises
 • Traditional flexible jump rope in a superior fitness weight

1500

Metal Spinner - Metal plate construction, rubber treads & rounded corners for safety. Can be used on any flooring surface. Made in Canada.



SPINNER

- Off ice training device
- Improves spinning technique, balance and agility
- Use on any floor surface (will not scratch)
- Use in open spaces away from furniture or other objects for safety reasons.
- Features dual rubber treads, metal plate construction and rounded corners for safety

SPINNER

1600 Silver



1600



1600 Coral



1600

1600



1600

1600 Flex Stretcher - Silver, Coral, Lime, Purple, Blue or Pink -

Training device for stretching and warm-up exercises. Great for improving flexibility and a useful device for increasing range of motion. Information booklet included.



1550 Plastic Spinner - Rocker style spinner gives the feel of spinning on a blade; use with care as it may damage certain types of flooring.

1550 PLASTIC SPINNER



BLADE BUDDIES: 1255 - 1279 - Plush animal blade covers with terry cloth lining.

Jerry's Blade Buddies

NEW

1255
Koala

1256
Turtle

1258
Pig

1259
Narwhal
*limited
quantities

1262
Fluffy Seal

1263
Penguin

1264
Purple Poodle

1264
Pink Poodle

1265
Toucan



1266
Grey Kitty



1268
Llama



1271
Unicorn

Jerry's Blade Buddies



1272
Hedgehog



1273
Panda



1275
Monkey



1272
Hedgehog



BLADE BUDDIES: 1255 - 1279

Plush animal blade covers with
cotton terry cloth lining.



1276
Lamb



1277
Cabin
Moose



1278
Snake



1279
Pegasus



Fun Food Soakers

Jerry's



1214 Fluffy Blade Covers - Packs of 12 Assorted only.

Assorted colours lined in brushed cotton. Colours may vary from those shown.

Made in Canada



1214

1214

1215 Glitter Blade Covers - Assorted Colours, lined in brushed cotton.



1215

1215



1418

1218



1218

1218 Fleece Blade Covers - Prints or Solids - Assorted Colours, lined in brushed cotton.



1218

1218

1418 Flannel Print Blade Covers - Assorted cotton prints, lined in absorbent terry cloth.

Products pictured are only a small sample for reference; colours and patterns vary from those shown above.

1417 Marshmallow Blade Covers - Super soft assorted prints, lined in brushed cotton.



1417

1417

136



1387
Skunk
*Limited
quantities



1388
Husky
Dog



1389
Tiger



1390
Bernese
Dog



1393
Lemur



1392 Multi-
Critter



Jerry's

Critter Tail Covers

1387 - 1399 Critter Tail Covers -

Extra plush tails on our critter covers feature super soft and absorbent terry cloth lining and extra thick padding.

1387 - 1399 Critter Tail Covers - Extra plush tails on our critter covers feature super soft and absorbent terry cloth lining and extra thick padding.

1394
Blue Kitten



1394
Pink Kitten



1395
Kangaroo



1396
Dragon



1398
Blue Leopard



NEW

1399
Ferret



1397
Black Critter



Jerry's
Critter Tail Covers

1219



**1219 Jerry's
Guard
Keychains**
Assorted Colours

1219



1316 Jerry's Silver Slide Guards

1316 Sky Silver



1316 Snow Silver



1316 Rose Silver



1316 Grape Silver



1316 Lime Silver



1316 Orchid Silver



139

1316 Jerry's Colour Slide Guards



1316 Banana Split

A slide guard with a yellow-to-orange gradient. The top surface features a row of raised, banana-shaped ridges. The bottom surface has a series of rectangular cutouts. A metal spring is visible in the center, held by two screws.



1316 Lime Frost

A slide guard with a green-to-blue gradient. The top surface features a row of raised, lime-shaped ridges. The bottom surface has a series of rectangular cutouts. A metal spring is visible in the center, held by two screws.



1316 Blue Raspberry

A slide guard with a blue-to-purple gradient. The top surface features a row of raised, raspberry-shaped ridges. The bottom surface has a series of rectangular cutouts. A metal spring is visible in the center, held by two screws.



1316 Midnight Purple

A slide guard with a dark purple-to-black gradient. The top surface features a row of raised, grape-shaped ridges. The bottom surface has a series of rectangular cutouts. A metal spring is visible in the center, held by two screws.



1316 Tutti Frutti

A slide guard with a pink-to-orange gradient. The top surface features a row of raised, fruit-shaped ridges. The bottom surface has a series of rectangular cutouts. A metal spring is visible in the center, held by two screws.



1316 Grape Freeze

A slide guard with a light blue-to-purple gradient. The top surface features a row of raised, grape-shaped ridges. The bottom surface has a series of rectangular cutouts. A metal spring is visible in the center, held by two screws.



1316 Cherry Blast

A slide guard with a red-to-black gradient. The top surface features a row of raised, cherry-shaped ridges. The bottom surface has a series of rectangular cutouts. A metal spring is visible in the center, held by two screws.



1316 Night Swim

A slide guard with a blue-to-black gradient. The top surface features a row of raised, swimmer-shaped ridges. The bottom surface has a series of rectangular cutouts. A metal spring is visible in the center, held by two screws.



Red Satin

Deep Teal Satin

Pearl Pink Satin

Frost Blue Satin

White Satin

Black Satin

Clover Satin

1216 Satin Guards



Sky Blue Satin

Purple Satin

Sapphire Satin

Hot Pink Satin

Frost Lavender

Yellow Satin

Ultra Violet Satin

1216 Jerry's Skate Guards

1216 Deluxe Skate Guards -

Deluxe two piece skate guards with springs in the middle. Available in glitter, gel gloss, cloud glitter, metal, stone and satin finish. Colours available as shown.

1216 Stone Guards

Blue Moonstone

Pink Opal

Carbon Graphite

Green Granite

Rose Quartz

Amethyst Quarry

Sky Granite

141

1216 Cloud Glitter Guards

Cloud Blue Glitter

Cloud Lime Glitter

Cloud Pink Glitter

Cloud Yellow Glitter

Cloud Purple Glitter

1216 Metal Guards

Bronze/Copper

Silver

Gold

Rose Gold



Black Glitter

Royal Glitter

Pink Glitter

Coral Glitter

Silver Glitter

Orchid Glitter

Green Glitter

Blue Glitter



Plum Glitter

Purple Glitter

Pink Champagne Glitter

Cola Brown Glitter

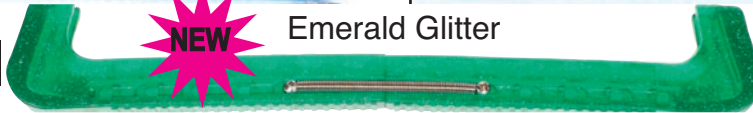
Gold Glitter

Lilac Glitter

Red Glitter

Turquoise Glitter

1216 Glitter Guards



Emerald Glitter

1216 Glitter Guards

Deluxe two piece skate guards with springs in the middle. Available in glitter, gel gloss, metal, stone and satin finish.
Colours available as shown.



Cherry Gel

Ice Blue Gel

Clear Gel

Lime Gel

Black Gel

Orchid Gel

Grape Gel

Turquoise Gel

1216 Gel Gloss Guards

Sky Blue Gel

Petal Peach Gel

Aqua Gel

Royal Gel

Petal Pink Gel

Lemon Gel

Emerald Gel

Red Gel



Jerry's Crystal Guards

1416

1416
Lime

1416
Light
Cherry

1416
Yellow

1416
Red

1416
Royal

1416
Emerald

1416
Orchid

1416
Black

1416
Coral

1416
Turquoise

1416
Purple

1416
Pink

1416
Light
Grape

1416
Aqua

1416 Crystal Guards - Deluxe two-piece guards with springs in the middle and rhinestone accents both on the ends and along each of the sides! Assorted colours.

Jerry's Gemstone Guards

1416 Gemstone Guards -
Multi coloured crystals in our popular crystal guards.

1416 GEMSTONE



**Black/Sapphire
Stones**

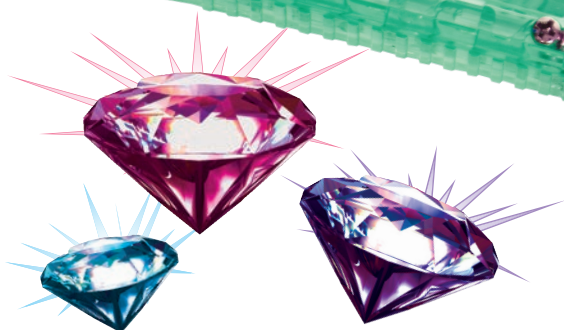
**Cherry/Pink Ruby
Stones**

**Black/Firestone
Stones**

**Blue/Sapphire
Stones**

**Black/Pink Ruby
Stones**

**Lime/Emerald
Stones**



1100

1100

1100

1100

1100 Mini Gloves - 100% acrylic - as shown, left to right: black, white, aqua, pastel pink, purple, royal blue, red, lime, fuchsia, bright orange, beige, lavender, bright pink, navy blue, dark green, pastel blue, yellow, mango, sky blue, burgundy.

1111

1111

1111

Youth Size

1111

1111

1111

1111 Gripper Mini Gloves - 100% acrylic - With gripper palms and fingertips - Black, white, beige Available in Youth one size & Adult one size

1110

1110

1110

1110 Childrens Mini Gloves - Youth size mini gloves - 100% acrylic - Black, white, beige, pastel blue, royal blue, sky blue, fuchsia, pastel pink, purple, lavender.

1106

1106 Daisy Crystal Gloves - Red - Regular size

1120

1120

Jerry's Gloves

NEW

1120 Mesh Competition Gloves - Black or Beige - Sizes S, M, L

1101 Rhinestone Mini Gloves - Black, white, aqua, pastel pink, lavender - Regular (Adult) size

1112

1112

1112 Skate Crystal Gloves - Hot Pink, Purple, Black or Sky Blue Regular one size

1112

145

1101

1101

1101



NEW

NEW

1121

1121 Glitter Mesh Competition

Gloves - Beige or Black - Sheer glitter backs with solid palms.
Sizes S, M, L



1121



1113 Marled Mini Gloves - White/Black, Purple/Black, Pink/Black, Blue/Black - Regular One Size

1109 Gemstone Mini Gloves - Sapphire Blue Stones, Pink Ruby Stones or Purple Amethyst Stones - Black gloves with coloured crystals - Regular one size



1109

1109



1102 Bracelet Mini Gloves - Black or White - Youth one size - Adult one size



1107 Crystal Mini Gloves - 100% acrylic - Scattered crystals - Black, purple, fuchsia, navy blue, beige, sky blue, burgundy

NEW

1108 Snowflake Crystal Mini Gloves - 100% acrylic - Snowflake design - Pastel Blue, black, royal blue, fuchsia, sky blue, purple, white





1103

1103

1103

1103 Furry Mini Gloves - As shown from left to right: Back row - black, white, wedgewood blue, pastel pink, royal blue, purple, lime, fuchsia - Middle row - amethyst, bright pink, navy blue, chocolate, port - Front row - burgundy, lavender, sky blue

1118

1105 Furry Legwarmers - On skate display cards - As shown, left to right: Back row - black, white, wedgewood blue, pastel pink, royal, lime, fuchsia - Front row - amethyst, navy blue, bright pink, port, lavender, sky blue, purple, burgundy

1118 Furry Headbands - One size - Lavender, Sky Blue, fuchsia, black, lime, navy blue, wedgewood blue, amethyst, bright pink, purple, burgundy

1105

1105

1105

1105



1481
Koala



1482
Cat



1483
Mouse



1484
Owl

Jerry's Skating Stuffedies 12" (30 cm)

Jerry's Skating Pal

Keyrings/
Bag Clips

NEW



1451



1452

1451 Tiger
1452 Husky



1462

Jerry's Plush Skating Pals 8" (20 cm)

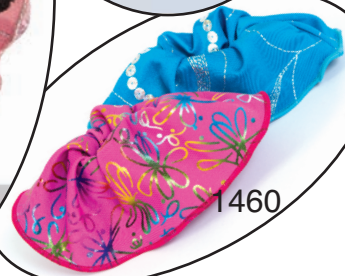
1462 Kangaroo
1465 Pink/Black Cat
1466 Fox



1465



1466



1460

1460 Plush Pal Skirts - Pack of 2 - Your pal can have extra skirts that can also be used for hair scrunchies!



1430



1430



1430



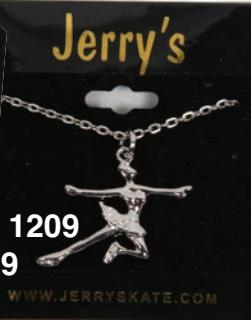
1430 Skating Cat Magnets - Great for the fridge, lockers, filing cabinet and metal desks!



1292 Crystal Skate Pin -
Pink or Clear



1297 Crystal Synchro Pin -
Pewter or Gold



Skater Jewellery
1208 Gold Skater Pin
1209 Skater Necklace -
Gold or Silver

Jerry's Jewellery



1201 Blade Keychain/Zipper Pull -
Pewter, Gold or **NEW Rose Gold**



1212

Blade Jewellery
1202 Blade Pin -
Gold or Silver
1212 Blade Bracelet
- Gold or Silver
1283 Blade Drop
Earrings - Silver



1213 Pewter Skate
Keychain - Pewter only

1207 Skater
Keychain -
Assorted
Colours



1219

1219

1219

1219

1219 Guard
Keychains -
Assorted
Colours



1295 Pewter Skate
Necklace -
Red, Blue, Black or Turquoise



Crystal SK8
Jewellery -
1298 Pin -
1299 Necklace



1296 Pewter Skate Pin



1295

1295

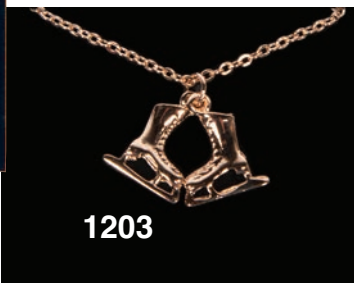
1295



ROSE GOLD



Made in Canada



Skate Jewellery - Gold,
Silver or **NEW** Rose Gold
1203 Necklace
1211 Earrings



Made in Canada

1288
Pink
1288 Necklace
Snowflake & Blade

1288
Blue
1289 Earrings
Jewellery - Pink, Blue



Crystal Skate Jewellery - Clear, Blue or Pink or
NEW ROSE GOLD

1280 Necklace
1281 Earrings



ROSE GOLD

1280



1280 Necklace - 1281 Earrings

Jewelry items are
made in Canada,
with premium
crystal accents,
and rhodium
plating for tarnish
free durability.





1010



1010 Lavender

1013



1013 Royal Blue

Solid Colour Single Bags - Triangle shaped skate bags with zippered back pocket, reinforced rigid bottom to protect against sharp skate blades and toe picks, and an adjustable shoulder strap.

1016



1016 Black

1018



1018 Deep Pink

1019



1019 Purple

Solid Colour Single Bags - Triangle shaped skate bags with zippered back pocket, reinforced rigid bottom to protect against sharp skate blades and toe picks, and an adjustable shoulder strap.

**1012 - Arc Design
Single Skate Bag -**

Triangle skate bag with mesh top for breathability, shoulder strap and reinforced bottom to keep picks & blades from cutting through.

1012



1020





Shoulder Pack Skate Bags -

Ergonomically designed single shoulder strap back pack. Loop grab handle, detachable cell phone pouch on the back strap, mesh water bottle holder, reinforced bottom to protect against sharp blades, front zip pocket .



Kangaroo Pack Skate Bag -

Back pack style skate bag with reinforced bottom, dual zippered side pockets, an interior zippered pocket and a separate zip around front with a large mesh pouch that accomodates damp practicewear and gloves or even a helmet. Mesh opening adjusts with a bungee and toggle.

Garment Bags - Designed to match a wide range of our skate bag styles. Full front zipper, skate embroidery logo, clear peek-a-boo window.





3020
Wedgewood



3050
Purple



3060
Black



4030
Blue

4070
Deep Pink

Penguin Print Skate Shoulder Packs - Single shoulder strap style ergonomic skate bag with cell phone pouch, mesh water bottle pocket, loop grab handle and zippered outer pocket for extra gear.

3050 - 3070 Bungee Skate Back Packs -

Mesh top side compartments for skates plus a roomy middle compartment that holds lots of gear and fits a helmet too. Reinforced bottom protects against blades. Ventilated side pockets are also great for storing wet guards and damp gloves.

LIMITED QUANTITIES



3070
Pink



4033 Blue

4077 Deep Pink

Penguin Print Garment Bags - Fully zippered garment bags in our fun penguin print to match our collection of print skate bags.

Penguin Print Skate Shape Bag - New print bag with fun skating penguin print, a mesh back pocket for gloves or a water bottle and an adjustable shoulder strap. Reinforced bottom keeps skate blades from cutting through.



4013
Blue

4017
Deep Pink



6025 - 6085 Graffiti Skate Bag on Wheels - Rolling duffel style skate bag with extendible handle, zippered outer pocket, large top compartment and separate bottom compartment for skates, plus an adjustable shoulder strap. 60 cm x 32 x 29 cm



6020 - 6090 Graffiti Carry All Skate Bag - Large size skate bag for holding guards, practice wear and accessories with a reinforced bottom to guard against sharp blades, a padded adjustable shoulder strap plus grab handles, all in our fun skate graffiti print.



Graffiti Garment Bags -



1410 Flannel Boot Bags - Purple or Blue Penguin Print

- 100% cotton bags with drawstrings.

1418 blade covers sold separately (Shown on page 132)



**1031 - 1038
Crystal Skates
Single Bag -**

Triangle shape with reinforced bottom, a shoulder strap and crystal skate silhouettes on both sides.

1032
Royal
Blue

1037
Bright
Pink

1031
Orchid

1036
Black

1038
Concord
Purple



5012
Purple

**5012 - 5018 Diamond Crystal
Single Bags -**

Triangular shaped skate bags with reinforced bottom to protect against toe picks, an adjustable shoulder strap and a sophisticated diamond & crystal pattern.

5014
Wedgewood

1052
Royal
Blue



1052 Crystal Skates Shoulder Pack -
Grab-and-Go style single shoulder back pack with grab loop, mesh water bottle holder, extra front zipper pockets, a reinforced bottom and sparkling crystal skate design.

5015
Deep
Pink

5016
Black

5018
Wine



New
Colour

New
Colour

5021
Purple

5024
Wedgewood

5028
Wine

5029
Navy

NEW

5021-5029 Diamond Crystal Shoulder Packs -

Ergonomically designed single shoulder strap back pack with our pretty crystal diamond pattern accents. Loop grab handle, detachable cell phone pouch on the back strap, mesh water bottle holder, reinforced bottom to protect against sharp blades, front zip pocket.

5020 Purple

5040 Deep Pink

5060 Black

5080 Wine

5020 - 5090 Diamond Crystal Carry All Skate Bag -

Large size skate bag for holding guards, practice wear and accessories with a reinforced bottom to guard against sharp blades, a padded adjustable shoulder strap plus grab handles, and of course a pretty scattering of crystals with our diamond pattern.

5090 Navy

**New
Colour**

5022
Purple

5066
Black

**5022 - 5099
Diamond
Crystal
Garment
Bags** -Black
back and one
side with
clear window
hole, plus our
lovely
diamond
crystals on
the other
side.

5088
Wine

5099
Navy

Skate Laces: all in lengths: 84", 96", 108", 120"



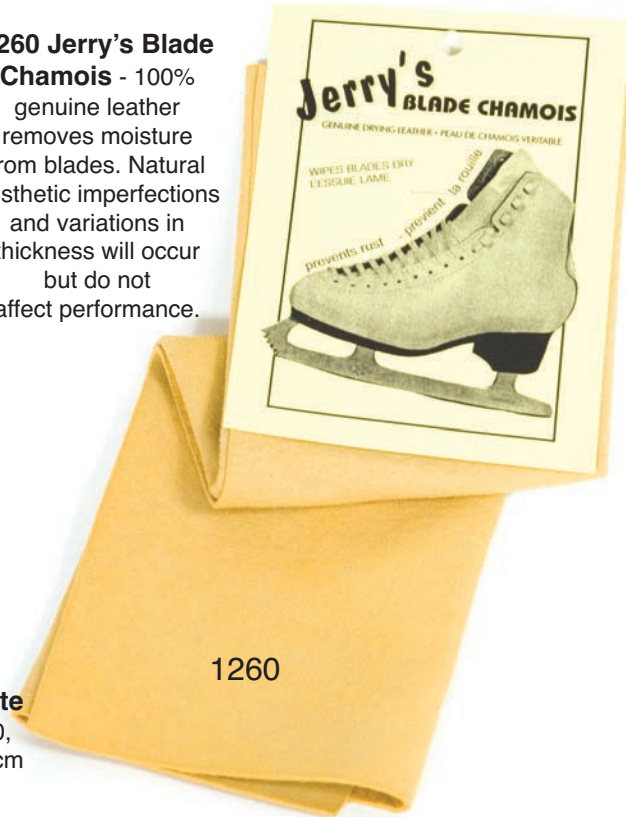
1204 - Skate Laces - Black, white or beige

1206 - Waxed Skate Laces - Black or white

1206 lengths: 84", 96", 108", 120"



1260 Jerry's Blade Chamois - 100% genuine leather removes moisture from blades. Natural aesthetic imperfections and variations in thickness will occur but do not affect performance.



1205 - Rhinestone Skate Laces - White or beige

Odor Aid Sprays:
1237 Green Eco
1238 Regular
1239 Pink Scented



1220 Risport Laces - Black or White
- Sizes 200, 220, 240, 260, 280 cm

1867 Core Ice Marled Sport Masks - Steel Grey, Kirsch Kick or Shadow Blue - 3-layer sport masks with a performance supplex outer layer and 2 inner layers of soft, stretchy lining. Sizes: XS/S or M/L

Jerry's Sport Masks

All Jerry's mask styles are contoured triple layer masks with nose and chin darts for shaping and have soft elastic ear loops with adjusters for a custom fit. They are all washable and re-useable. Note: these are not medical grade masks and should always be washed thoroughly after each use.



1867

1240 Sport n' Clean Hand Sanitizer - Perfect size to throw in skate bags, lockers and purses, so it is always handy. Click open top is easy to use and super spill resistant.



1240

1870 Snowflake Masks - Black, Light Blue or Royal Blue - Lycra outer layer with a crystal snowflake detail. Sizes: XS/S or M/L



1870

1870

1224 Twinkle Bootcovers - Black or White - Youth or Adult
1225 Lycra Bootcovers - Assorted Colours - Youth or Adult
1227 Velvet Bootcovers - Assorted Colours - Youth or Adult



718 Fuzzy Bootcovers - White Only - XXS (Youth skate size 8 - 10), XS (Youth 10 - 12), S (Youth 13 - 2), M (Adult 3 - 6), L (Adult skate size 7 - 8 1/2)



1250



1226 Crystal Covers-

Lycra bootcovers
 1226D - Black Daisy
 1226S - White or Black Snowflake



1250 Odor Aid Odor Magnets - 2-Pack -
 These odor and moisture eliminators use copper technology to keep skates and sports bags fresh and dry. They are re-chargeable and re-useable.



1251 Odor Aid Shaped Odor Magnets - 2-Pack - Specially formed in foot shaped pods, these odor and moisture wicking pods fit down into the toes of skates and footwear to fully reach the whole footbed for superior odor eliminating protection. They can be recharged and used repeatedly.





EBAG WM



EBAG WM



EBAG WM - Edea With Me Bag - Perfect for all the items you want organized with you at the rink!



1229 Edea Fluorescent Laces - Edea laces are now available in fun neon colours - Hot Pink, Neon Blue and Lime Green
 Sizes: 220, 240, 260 cm



ESPIN - Edea spinners - Assorted designs - Plastic spinner with curved rocker for off ice training



E717 - Edea Thermal Bootcover -

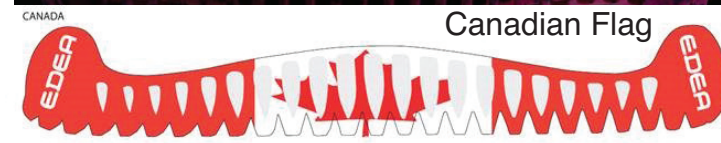
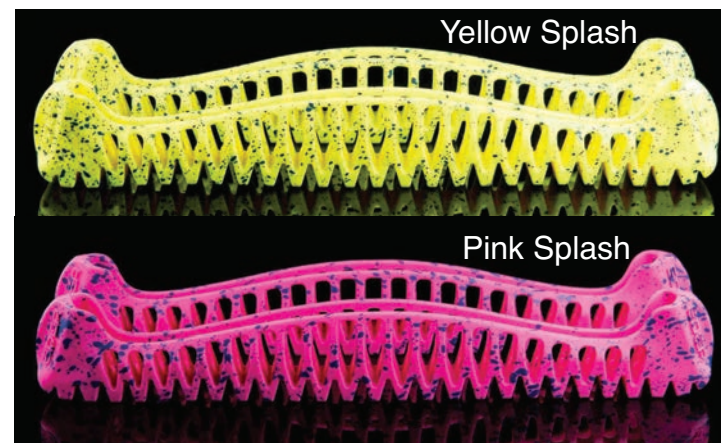
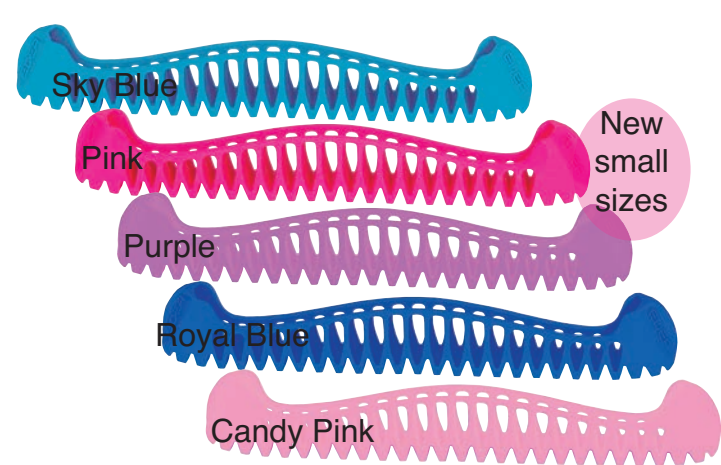
Black only - Wrap their feet in warmth - 100% neoprene construction. Front zipper.
 Sizes: XS (22.5-23.0),
 S (24.0-25.0),
 M (25.5-26.5),
 L (27.0-28.0),
 XL (28.5-29.5)



EABSORB - Edea Odor & Moisture Absorbers to keep boots fresh and dry. Set of 2 per package. TOOTSYS or LOLLIPOP as shown

E-SOLE - Impact and shock absorbing molded insoles specially designed to dissipate 96% of shock and vibration due to impact. Hypoallergenic and anti-bacterial. Order according to your skate size.





EGUARDS -

Edea guards are flexible and user-friendly, eliminating the need for springs. A rainbow of colour options!

Regular sizes (above) and now small sizes available. Also available in pink splash and yellow splash.



EPOLISH - Edea Polish

E-SPINNER - Edea Spinners now allow for jumping take-off practice as well as spinning, with the use of interchangeable rubber bands which simulate toe pick action.





WAVE SET

The newest eye-catching boot from Edea features unmatched performance enhancing designs. The Tecnomicro upper is a special composite microfiber that is a thermo-insulating material to keep feet warmer, and acts like a natural leather with the added benefits of being more resistant to abrasion and tearing, as well as lighter. Combined with the antibacterial lining and the special waterproof finish this boot is the perfect choice for beginner skaters. Made in Italy



WAVE SET

- * Thermo-insulating upper to keep feet warmer
- * Waterproof finish applied to uppers
 - * Abrasion resistant uppers
 - * Light weight
 - * Antibacterial lining
- * Extra Set of hooks for easier and faster lacing
- * Carbon steel hooks are recessed for ease of lacing and holding laces to prevent slipping
- * Comes mounted with premium rust resistant stainless steel Sterling blade



WAVE SET

MOTIVO SET

Ultra comfortable premium leather skate designed using an innovative honeycomb material for a stronger and lighter footbed giving greater feeling and edge awareness to the beginner skater. The waterproof, thinner sole also keeps the skaters' centre of gravity lower to improve control. The boot comes mounted with a premium stainless steel Sterling blade.

STIFFNESS RATING: 45



MOTIVO SET



A new beginning

A new
161
Wave





OVERTURE SET -

- Full Italian leather uppers
- Thin soles for better control
- Anatomically designed padded tongue
- Orthopaedic foam ankle padding
- Embedded hooks for strength

STIFFNESS RATING: 48

OVERTURE - Italian leather skates designed for skaters working on single jumps.

1229



1229 Edea Laces - Black or White
Sizes: 240, 260, 280 cm



E DRILL

E DRILL - Edea drill bits are available to assist in mounting



FLAMENCO ICE -

- Low back profile for flexibility & better toe extension
- Padded, flexible back cuff for comfort
- Anatomic, double padded tongue for comfort
- Orthopaedic foam ankle padding
- Two component dual sole for minimizing vibrations
- New footbed system for better foot alignment & support

STIFFNESS RATING: 70

FLAMENCO ICE - White & Black - This model is designed for serious ice dancers as it allows for freedom of movement with a stiffer level skate. Also a popular model with coaches.



CHORUS -

- Thin soles for better control
- Quick drying perforated microfibre lining
- Cushioned back cuff for comfort
- Anatomically designed padded tongue
- Orthopaedic foam ankle padding
- New footbed system for improved foot support & alignment
- Embedded hooks for strength

STIFFNESS RATING: 70

CHORUS - White or Black - This skate is ideal for skaters landing single jumps and starting doubles. Full Italian leather uppers and a very streamlined look combined with unparalleled comfort.



CHORUS SET - White or Black -

The Chorus boot is also available as a set with a precision mounted Sterling Blade.





Concerto



CONCERTO - Black and White -

This is a strong boot for serious, top level skaters. Excellent ankle support and superior comfort. Worn by legendary Canadian skater Patrick Chan for his entire competitive career, this boot is still the boot of choice for many of the top skaters at the World level.



CONCERTO -

- Two component dual sole for minimizing vibrations
- New footbed system for better foot support and alignment
- Orthopaedic foam ankle padding for comfort & firm foot placement
- Cushioned back cuff for comfort & improved foot extension
- Anatomical tongue with double padding to reduce lace bite
- Quick drying perforated antibacterial microfibre lining



STIFFNESS RATING: 85

Concerto

ICE FLY - The Choice of World Competitors



Ekaterina Kurakova



ICE FLY - ★★★★★★★★

- Two component dual sole reduces vibrations
- New Air-Tech lining for quick drying
- Mesh & Microfibre panelled uppers
- Anatomic tongue with double padding
- Orthopaedic foam ankle padding for comfort
- Lace loops on the tongue keep laces aligned
- New footbed system for support & alignment
- Embedded hooks for strength

STIFFNESS RATING: 90

ICE FLY - Black or White - Top of the line boot for advanced skaters landing triples & quads. This is a strong boot that miraculously still allows for a flexible range of motion! Very lightweight in design to reduce fatigue & allow for extra height on jumps.



PIANO



PIANO -
Available in
Black or White



PIANO -

- Revolutionary shock absorbing technology engineered to prevent injury and stress on joints and bones
- Premium padded collar surrounds you in comfort
- Lace loops on tongue to prevent movement
- Full circulating ventilation and breathability



Ekaterina Kurakova



Wrap Around Cushioned
Padded Collar



RISPORT® SKATES

Antares Set



**ANTARES Set -
White or Black -**
Stiffness rating: 30

This skate features a new thinner sole, improved hourglass contoured tongue for comfort and full stitching around the laces.

RISPORT® SKATES



R-POLISH

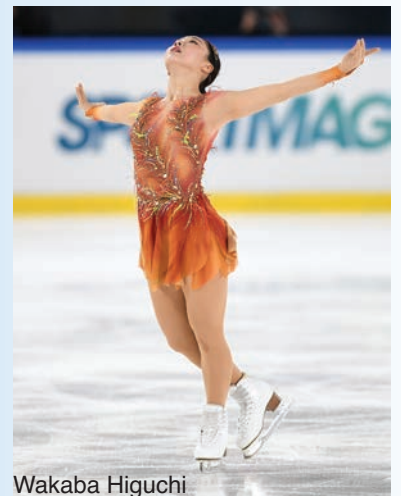
R-POLISH -

Specially formulated Risport skate cream for cleaning and conditioning leather boots. The kit is easy to use and comes with its own handy applicator.

**Electra Set - White
and Black -**

Stiffness rating: 45
The Electra comes as a set mounted with a Sterling blade.
Lightweight upper, strong ankle support with enough flexibility for mid range skaters. Well padded for comfort.

Electra Set



Wakaba Higuchi

RISPORT® SKATES

RF3 Pro - White and Black -

Stiffness Rating: 50
Natural Leather Boot with all around padded collar for extreme comfort. Angled soles allow for better edges while antibacterial microfiber lining promotes foot health.

Comes in AA, B, C, & mens width.



RF3 Pro



RF3 Pro



Shoma Uno

ROYAL PRO
White and Black -

Stiffness Rating: 55
Truly featherweight upper level skate model, with fantastic fully padded all-around cuff profile for extreme comfort, a revolutionary tongue that conforms to the foot and dual lace loops to prevent pressure on the toes. Ugraded hooks, loop stitching and a sprinkle of crystals complete the design.

Comes in B, C, & mens width.



ROYAL PRO



Wenjing Sui & Cong Han



RF1 ELITE

RF1 Elite - White and Black

Stiffness Rating: 90

Superior World Class boot with premium traditional leather construction. This boot is the choice of the top international competitive skaters around the world. Crafted in Italy by world renowned craftsmen, this boot is constructed for all triple and quadruple jumps. Lace loops and super padded tongue keep comfort to a maximum. The special angled sole allows for deep edge movement.

AA,B & C widths.



Wenjing Sui & Cong Han



Dance Prime



Royal Elite - white

ROYAL ELITE - White or Black -

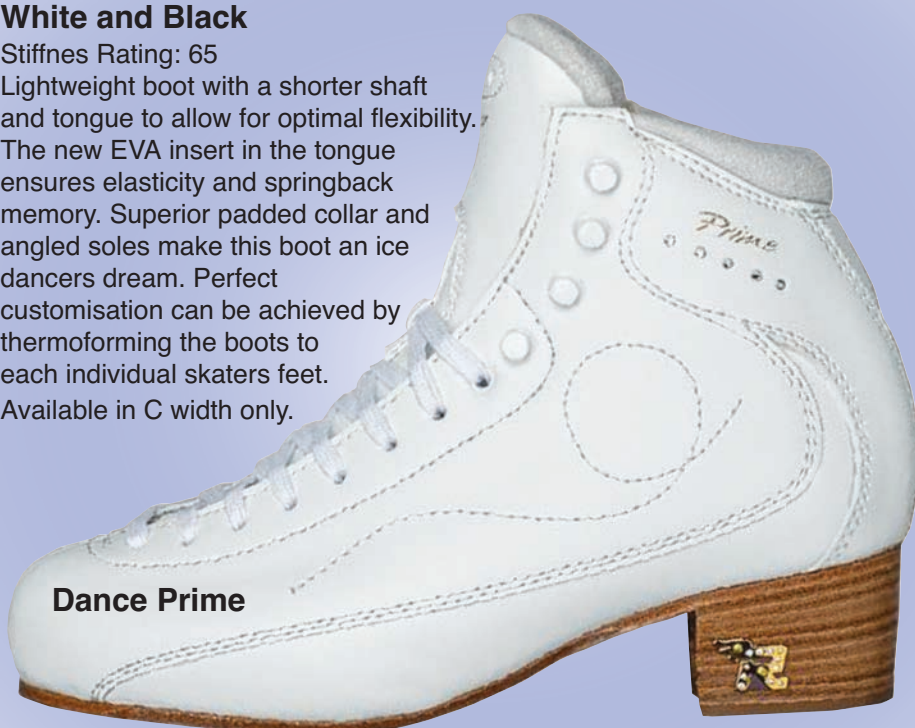
Stiffness Rating: 90

New top of the line super lightweight model sports sparkling crystals and dressy loop stitching and comes in traditional white and black as well as a fabulous new pearl colour. Wow! Luckily the boot is as technical as it is pretty. Designed with an ergonomically padded tongue, dual lace loops for a snug no-slip fit, premium antibacterial microfibre lining infused with aloe vera and a lower modern cut boot height. Available in B and C plus mens width.

RISPORT®
SKATES
Dance Prime**White and Black**

Stiffness Rating: 65

Lightweight boot with a shorter shaft and tongue to allow for optimal flexibility. The new EVA insert in the tongue ensures elasticity and springback memory. Superior padded collar and angled soles make this boot an ice dancers dream. Perfect customisation can be achieved by thermoforming the boots to each individual skaters feet. Available in C width only.



Dance Prime



Wakaba Higuchi

RISPORT®
SKATES



Royal Prime

Royal Prime - White and Black

Maximum Stiffness Rating: 90

The newest technology from Risport for the highest level competitors doing quadruple and triple jumps. A special crystallisation process guarantees the durability and longevity of the boots. The lining is infused with aloe and offers both anti-inflammatory and anti-bacterial benefits. Leather soles are specially angled to allow for extra deep edges. Innovative collar design allows superior extension and comfort, and the feather light construction improves endurance.

Available in B and C widths

RISPORT®
SKATES



Galaxy - The latest design from MK introducing a parallel sided freeskating blade made from 3.8mm steel. This blade also features intricate cross cut toe picks. 8ft primary rocker radius and 7/16 radius of hollow.



Professional -

Classic steel freestyle blade with parallel sides and cross-cut picks. Excellent for advancing skaters doing more difficult jumps and spins. Counter sunk mount holes and factory sharpened. 7 ft rocker; 7/16 radius of hollow.



MK Professional Lite -

22 % Lighter version of the traditional carbon steel MK Professional blade. The new Professional Lite provides skaters with the advantage of reduced fatigue.

The Professional Lite is designed as a thinner blade which allows for quicker changes of edges and improved glide. Superior freeskating blade with intricate cross cut picks and parallel siding.

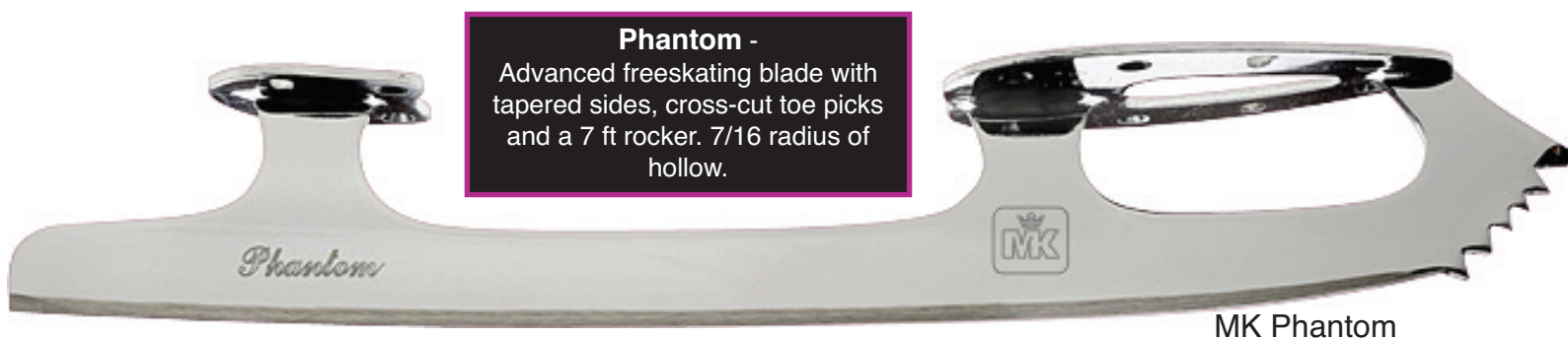
7 ft rocker - 1/4" sizes.



All MK Blades are made in England



The MK Dance Blade is undoubtedly the top choice for competitive ice dancers around the world. Found on podium after podium, this is the blade worn by champions across the globe. These blades from MK showcase all of the attention to detail that is synonymous with the company: countersunk mount holes, laser cut right and left sole plates and high end chroming for a jewellery-like finish. They are proudly crafted in Sheffield England melding time honoured traditions alongside the newest innovations in technology. Unbeatable quality and assurance for the most demanding of skaters. An enduring Legacy.



The MK Phantom is a world renowned high performance freeskating blade worn by today's World Champions. They feature some of the most aggressive cross-cut toe picks available anywhere world wide, enabling phenomenal, superior jumping. Every pair is meticulously crafted with great care by artisans, many who are 3rd generation craftsmen at their state of the art plant in Sheffield England. Time honoured attention to detail is combined with new high technological robotic tooling to produce all MK blades to the most exacting standards. This dedication and care is why champions like Patrick Chan skate on MK Phantom Blades. Available in 1/4" increments.





MUST HAVE BLADES



MUST HAVE BLADES



MK Gold Star Revolution - The latest carbon fibre technology reduces weight to improve endurance and maximizes jumping height. Advanced freeskating blade with cross cut toe picks and side honing. 7 ft rocker - 7/16 radius of hollow. Sizing in 1/4" increments.

JOIN THE REVOLUTION!



MUST HAVE BLADES



MK Phantom Revolution - The choice of champions, now available in feather light carbon fibre. Advanced freeskating blade also features cross cut picks and dove tailing to improve flow and speed. 7 ft rocker - 7/16 radius of hollow. 1/4" sizes.



Coronation Ace - The tried and true Coronation Ace blade features cross cut toe picks with parallel siding and a 7 ft rocker. 7/16 radius of hollow.



Coronation Ace Lite - The newest innovation from John Wilson features a light weight design with strengthened sole plates and thinner blade for faster changes of edges. Same dynamic pick profile and cross cut teeth as the Coronation Ace.

17%
LIGHTER

John Wilson
THE PERFECTION TO YOUR ROUTINE

Coronation Ace Lite -





Pattern 99 - One of the Worlds' most recognised blade is worn by champion after champion, year after year. Aggressive freeskating toe pick profile combined with parallel siding, straight cut picks and an 8 ft rocker. 7/16 radius of hollow.

John Wilson Blades are the unquestionable industry leaders in design and performance for the World's top competitive skaters. They are crafted with great care in England using time honoured traditions, craftsmanship and the latest in innovation.

John Wilson
THE PERFECTION TO YOUR ROUTINE



Gold Seal - Advanced freeskating blade with 8 ft rocker, cross cut picks, side honing and solid sole plate. 7/16 radius of hollow.

John Wilson
THE PERFECTION TO YOUR ROUTINE

Revolutionary Revolutions



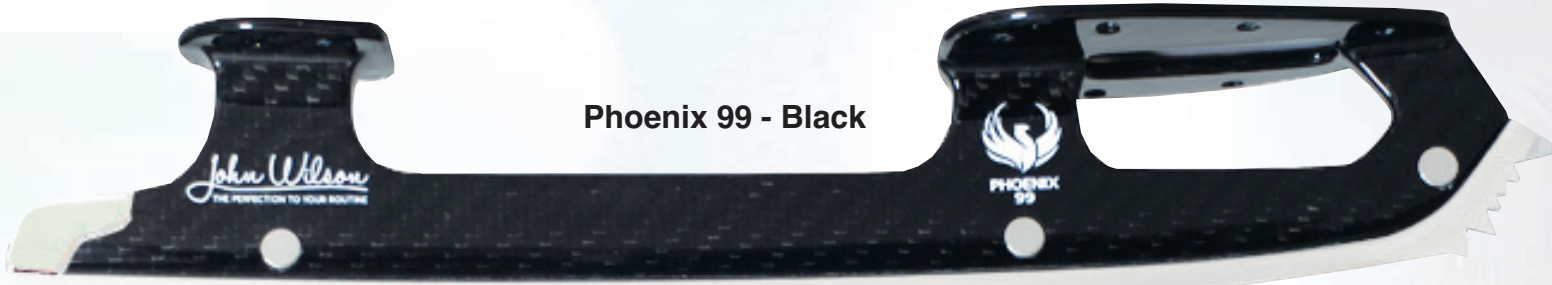
Pattern 99 Revolution - Worn by current World and Olympic Champions, this aggressive freeskating blade is designed with the newest carbon fibre components for lightness and flex cushioning on landings. 8 ft rocker, straight cut picks and parallel sided. 7/16 radius of hollow.



Gold Seal Revolution - The new benchmark in freeskating blades, the Gold Seal Revolution combines carbon fibre technology with all the benefits of a traditional steel blade. This makes for a more dynamic, flexible, lighter blade. It features cross cut picks, side honing and an 8 ft rocker. 7/16 radius of hollow.



John Wilson
THE PERFECTION TO YOUR ROUTINE

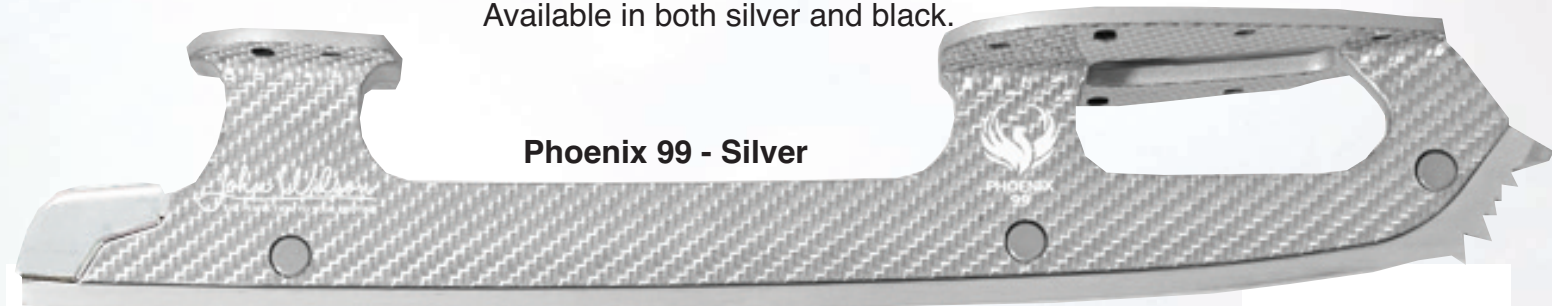


Phoenix 99 - Black

Phoenix 99

Freeskate blade in the ultimate lightweight Phoenix technology features parallel siding and world renowned aggressive, straight toe pick configuration. Primary rocker radius is 8 ft.

Available in both silver and black.



Phoenix 99 - Silver



Phoenix Engineering

- Officially the highest blade on the market
- 46% lighter than traditional blades, and up to 20% lighter than aluminum blades
- Carbon fiber body with a nano charged matrix formula to provide superior strength
- 420 grade stainless steel runner for extended edge life



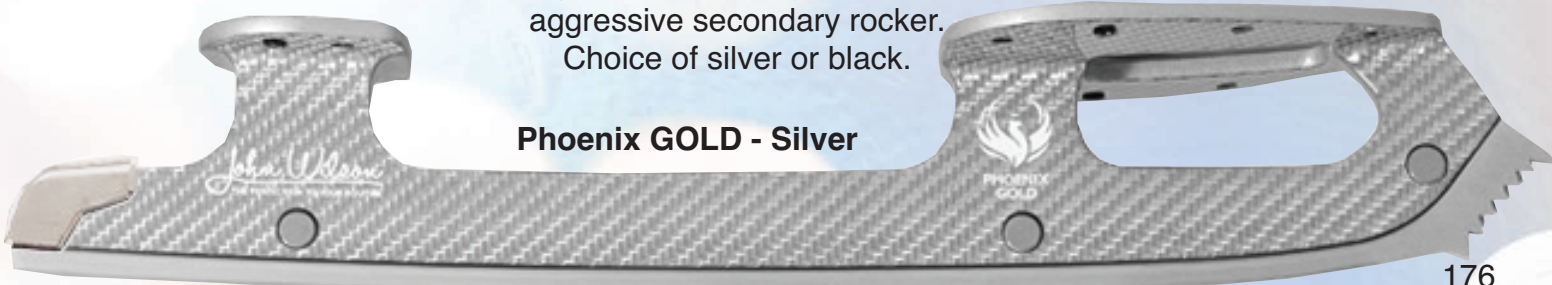
Phoenix GOLD - Black

Phoenix Gold

Super light weight carbon fibre blade for advanced competitive skaters wanting to conserve energy during performances and maximize air time in their jumps and lifts.

Crosscut toe picks with a high stanchion height, 8 ft primary rocker radius and an aggressive secondary rocker.

Choice of silver or black.



Phoenix GOLD - Silver

Jerry's

2022

Jerry's Skating World Inc.
265 Hood Road, Unit 4
Markham, Ontario, Canada
L3R 4N3

Toll Free: 1-800-263-2496
Telephone: (905) 477-1172
e-mail: sales@jerryskate.com

Website: www.jerryskate.com

Printed in Canada

